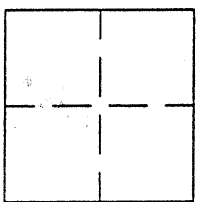


BK 38 CR PG 9

CORNER RECORD

APN No. 38 - 3199 - 45 - - - (Optional) Document Number CR 4294
City of Oakland County of ALAMEDA, California
Brief Legal Description Parcel A, P.M. No. 2779, 107 Maps 83



CORNER TYPE

Government Corner ☐ Control ☐
Meander ☐ Property ☒
Rancho ☐ Other ☐
Date of Survey JUNE 5, 2002

COORDINATES (Optional)

N. _____
E. _____
Zone _____ Datum _____
Elev. _____

Corner - Left as found ☒ Found and tagged ☐ Established ☒ Reestablished ☐ Rebuilt ☐

In compliance with Section 8771 of the Professional Land Surveyors' Act, this corner record is being filed to
ESTABLISH ____ / REESTABLISH ____ the position of an existing monument PRIOR ____ / SUBSEQUENT ____
to street or highway reconstruction. (Use this portion only when applicable.)

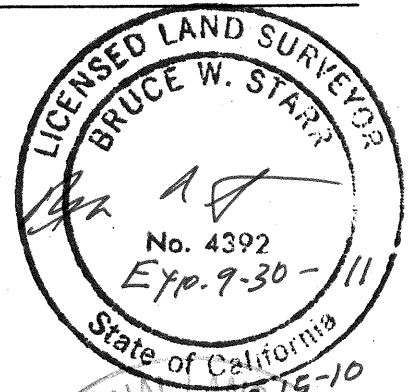
Identification and type of corner found: Evidence used to identify or procedure used to establish or reestablish the corner:
See Map

A description of the physical condition of the monument as found and as set or reset: _____
See Map

SURVEYOR'S STATEMENT

This Corner Record was prepared by me or under my direction in conformance with
the Land Surveyors' Act on Sept. 7, 2010

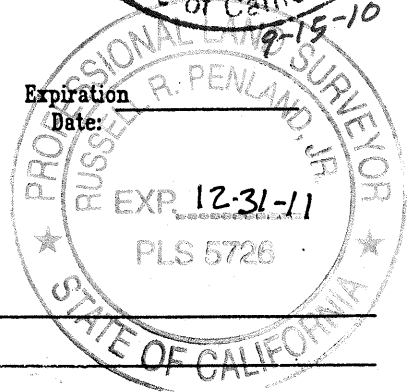
Signed [Signature] L.S. ~~or~~ R.C.E. Number 4392



COUNTY SURVEYOR'S STATEMENT

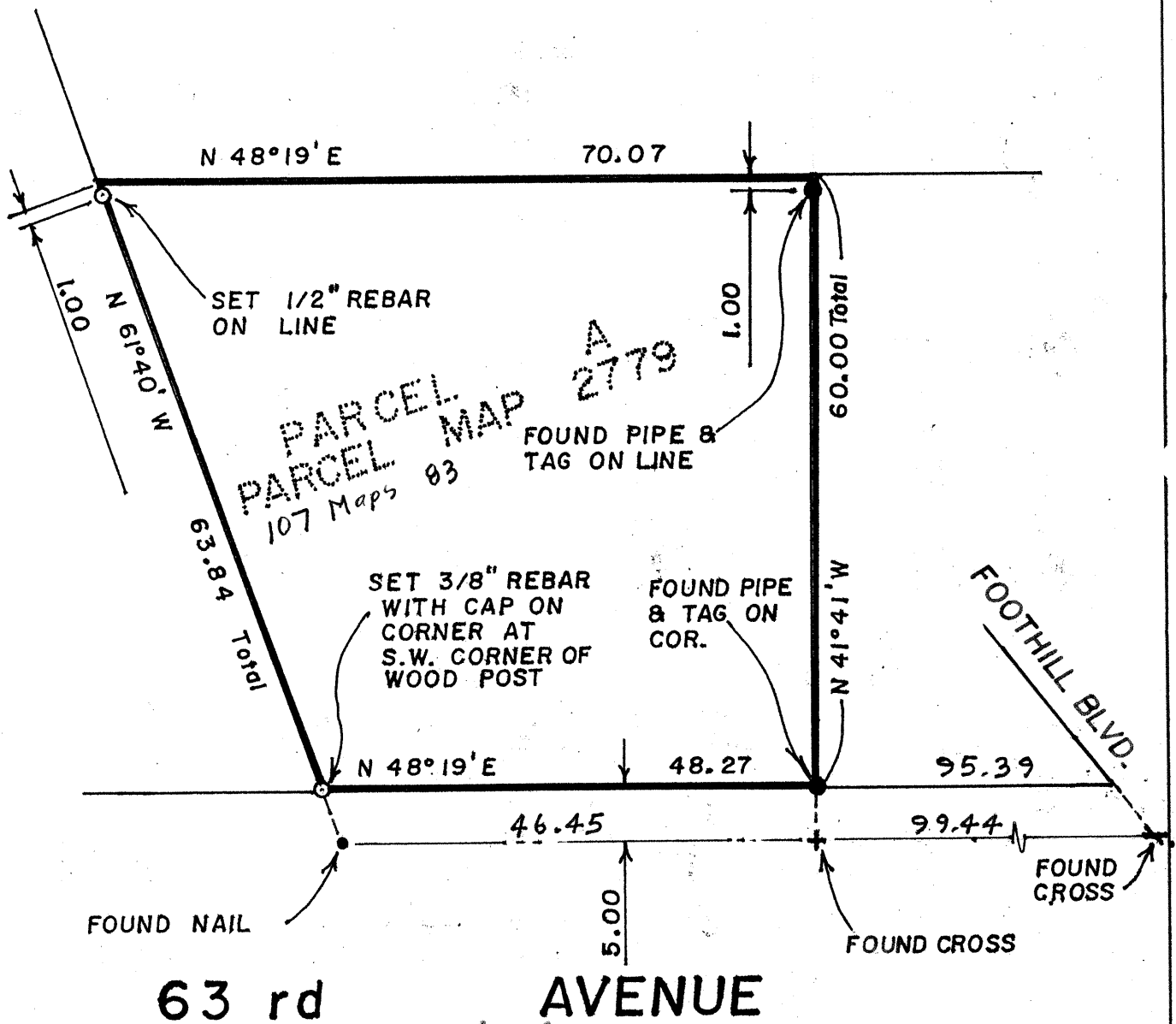
This Corner Record was received 9-8-2010 and examined
and filed 9-9-2010

Signed [Signature] Title County Surveyor



County Surveyor's Comment _____

SCALE: 1" = 16'
JULY-2002



38-3199-45