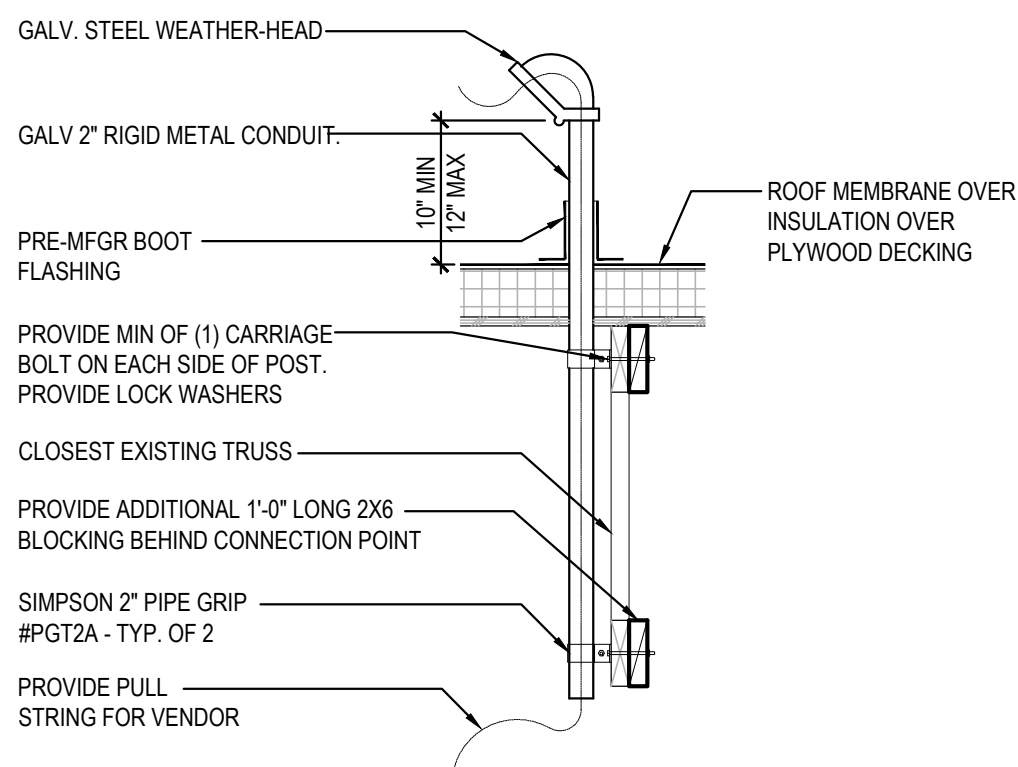
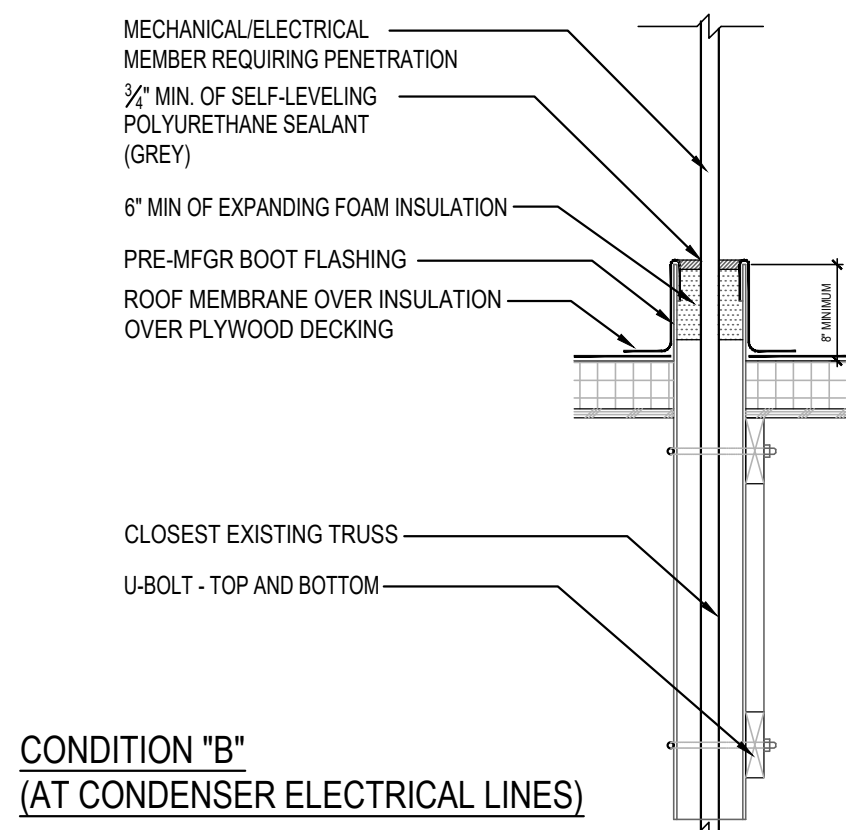
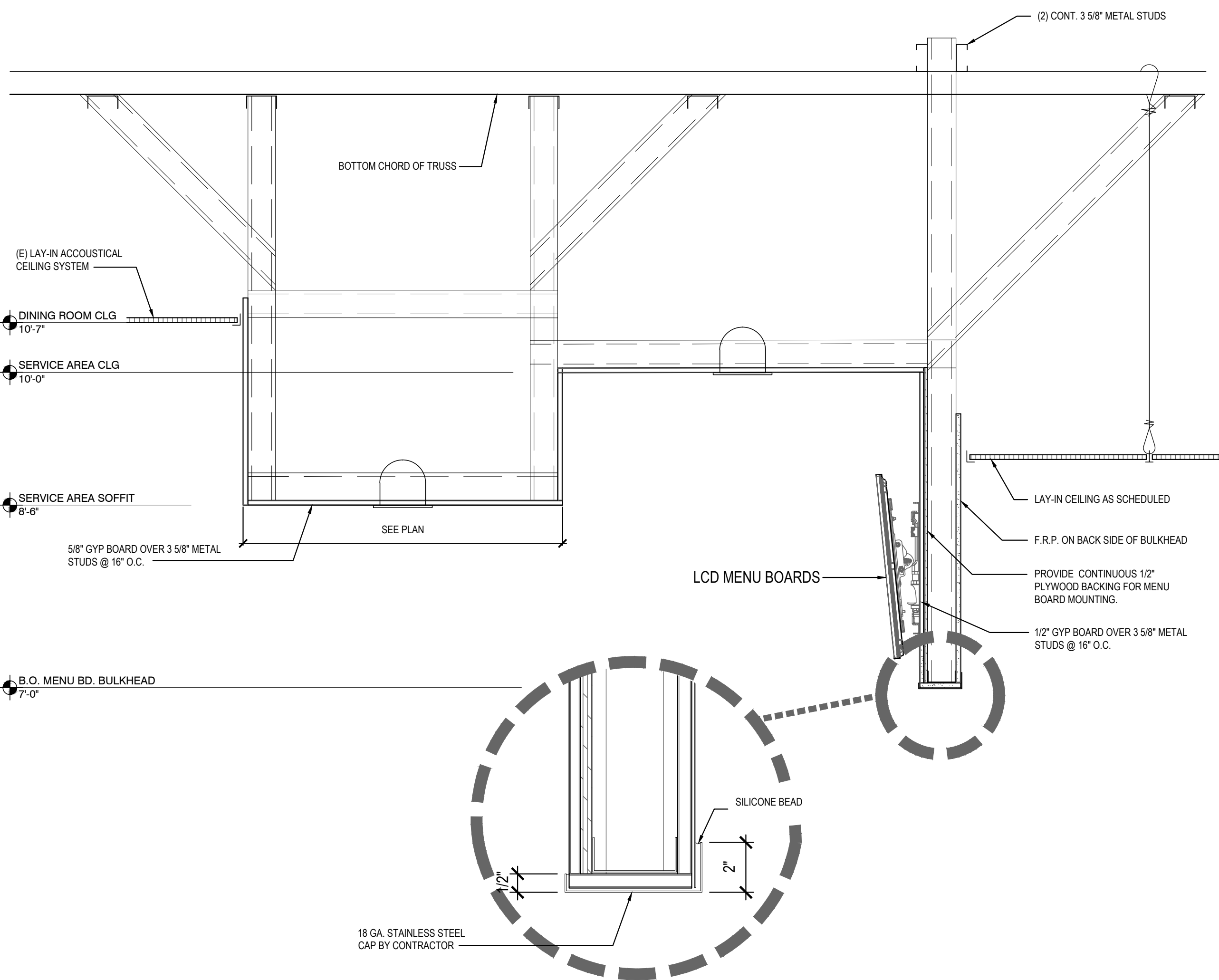
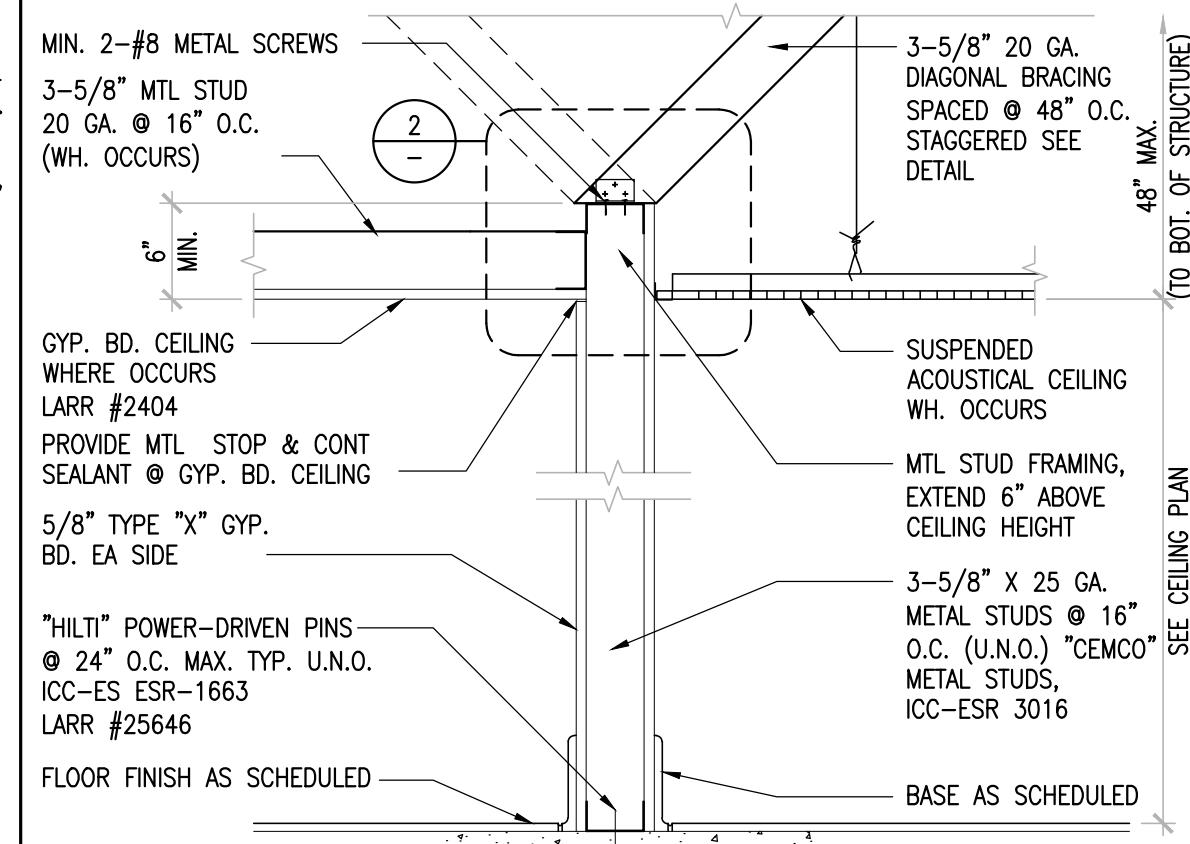
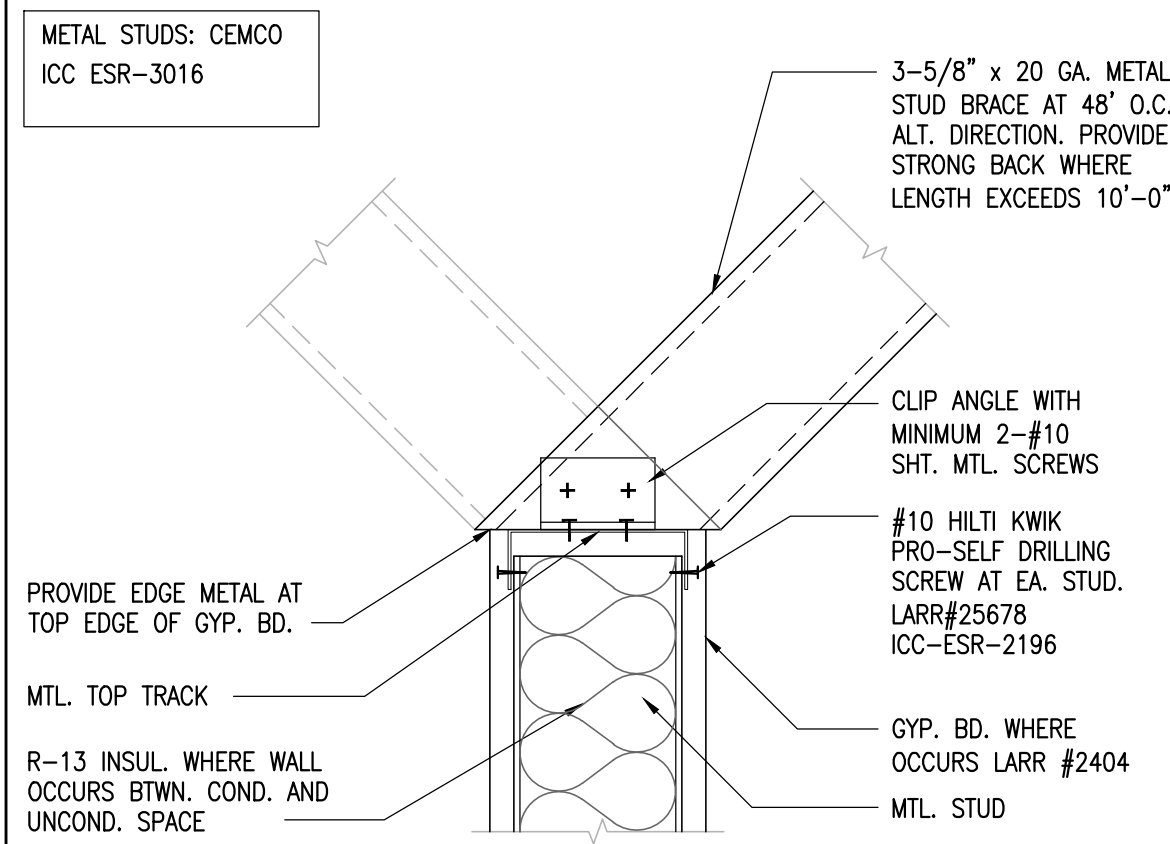


- NOTES:
- CONDENSER RACK IS SLOPE TO ACCOMMODATE SLOPE OF ROOF. ANGLE FRAME SHALL BE LEVEL AT FINAL INSTALLATION.
 - ALL STEEL WILL BE HOT DIPPED GALVANIZED.
 - TOP ANGLE FRAME MUST BE REMOVABLE TO INSTALL PRE-FABRICATED BOOT FLASHING.
 - ALL CONNECTING HARDWARE (CARRIAGE BOLTS, LAG BOLTS, NUTS, WASHERS, ETC) SHALL BE STAINLESS STEEL.
 - CONTRACTOR TO SUPPLY AND INSTALL ATTACHMENTS/HARDWARE REQUIRED TO MOUNT CONDENSER EQUIPMENT TO FRAME.
 - UNISTRUT SHALL BE GALVANIZED



METAL STUDS: CEMCO
ICC ESR-3016



CONDENSER RACK DETAILS 4

NOT TO SCALE A-407

SECTION AT SOFFIT 1

NOT TO SCALE A-407



PANDA RESTAURANT GROUP INC.
1683 Walnut Grove Ave.
Rosemead, California
91770
Telephone: 626.799.9898
Facsimile: 626.372.8288

All ideas, designs, arrangement and plans indicated or represented by this drawing are the property of Panda Express Inc. and were created for use on this specific project. None of these ideas, designs, arrangements or plans may be used by or disclosed to any person, firm, or corporation without the written permission of Panda Express Inc.

REVISIONS:

1	ELPX	06/21/2017

ISSUE DATE:

1	35% SUBMITTAL	03/24/2017
2	95% SUBMITTAL	05/05/2017
3	BID SET	07/10/2017

DRAWN BY:

PANDA PROJECT #: B1-18-D5212

ARCH PROJECT #:

PANDA EXPRESS

BUILDING 29722
FORT GORDON, GA

A-407

ARCHITECTURAL
DETAILS

BID SET 07/10/2017 (NOT FOR CONSTRUCTION)