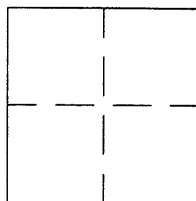


CORNER RECORD

APN No. _____ (Optional) Document Number CR-1525
 UNINCORPORATED County of ALAMEDA, California
 Brief Legal Description IRON BOLT ON BARTLETT AVE AT INTERSECTION OF GARDEN AVE AND A RAILROAD SPIKE AT END

**CORNER TYPE**

Government Corner ☐ Control ☐
 Meander ☐ Property ☐
 Rancho ☐ Other ☒
 Date of Survey JULY 2, 2001

COORDINATES
(Optional)

N. _____
 E. _____
 Zone _____ Datum _____
 Elev. _____

Corner - Left as found ☒ Found and tagged ☐ Established ☐ Reestablished ☐ Rebuilt ☐

In compliance with Section 8771 of the Professional Land Surveyors' Act, this corner record is being filed to
 ESTABLISH X / REESTABLISH _____ the position of an existing monument PRIOR X / SUBSEQUENT _____
 to street or highway reconstruction. (Use this portion only when applicable.)

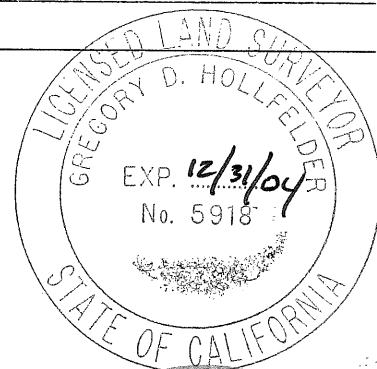
Identification and type of corner found: Evidence used to identify or procedure used to establish or reestablish the corner:
THE CONTROL POINTS DESCRIBED BELOW WERE REFERENCED BY CONCRETE NAILS AND A SCRIBED CROSS
FOUND ON THE CENTERLINE OF GARDEN AVE AND A REFERENCE LINE IN DRIVEWAY AT THE END.

A description of the physical condition of the monument as found and as set or reset: AN IRON BOLT WAS FOUND IN GOOD
CONDITION ON BARTLETT AVE AT THE INTERSECTION OF GARDEN AVE. ALSO A RAILROAD SPIKE WAS
FOUND IN GOOD CONDITION AT THE END OF BARTLETT AVE INTERSECTING A DRIVEWAY TO THE SOUTHEAST.
THESE CONTROL POINTS ARE IN DANGER OF BEING DESTROYED DUE TO ROAD CONSTRUCTION.
SEE DRAWING NEXT PAGE. •

SURVEYOR'S STATEMENT

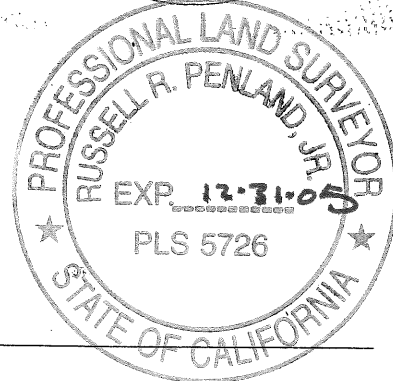
This Corner Record was prepared by me or under my direction in conformance with
 the Land Surveyors' Act on 10/31/ 2001.

Signed Gregory D. Hollfelder L.S. or R.C.E. Number 5918

**COUNTY SURVEYOR'S STATEMENT**

This Corner Record was received 7-18 2001 and examined
 and filed 12-15 2001 03

Signed [Signature] Title County Surveyor

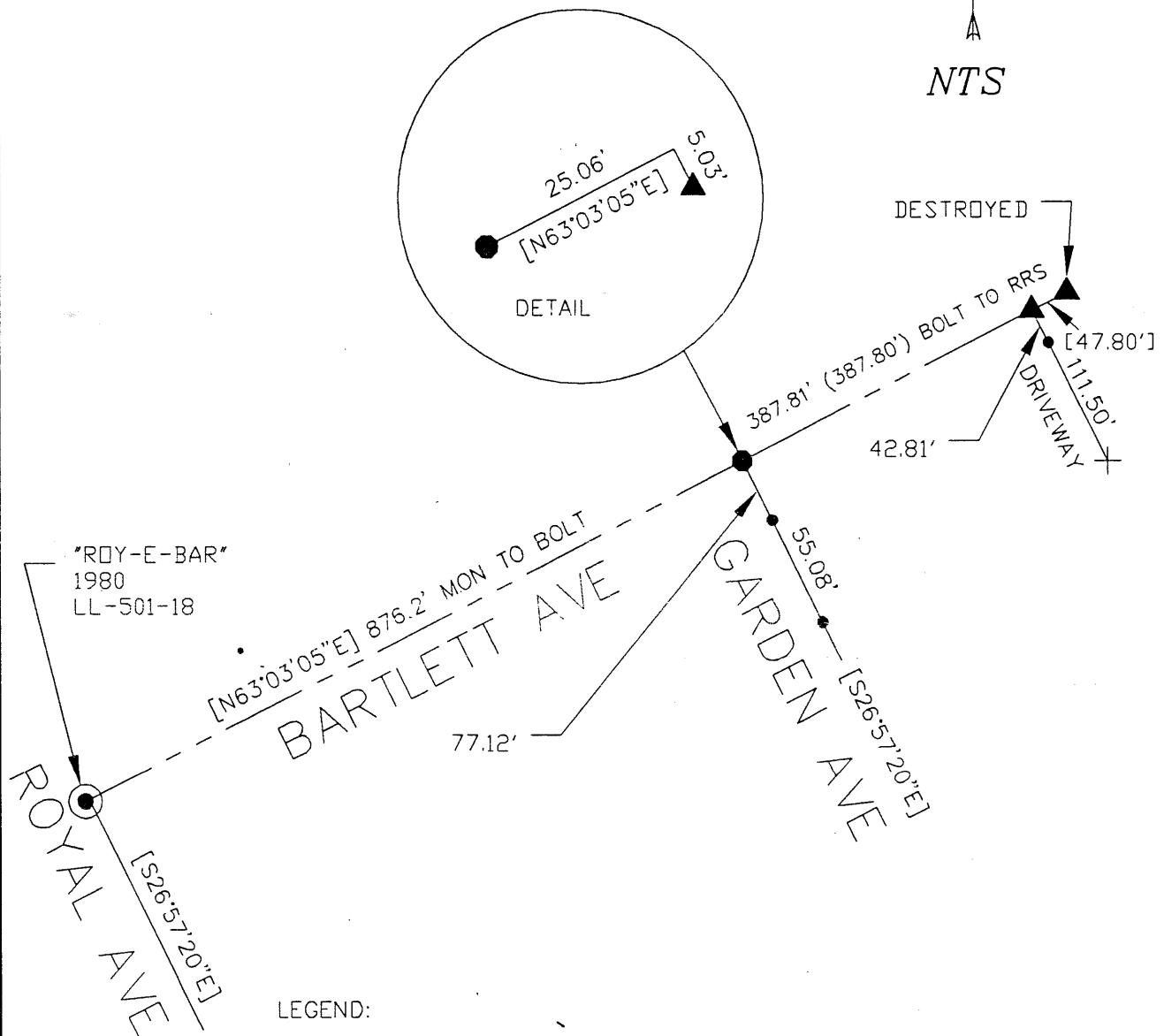
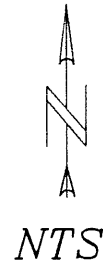


County Surveyor's Comment _____

REFERENCE: ALAMEDA COUNTY MAP,

TRACT;
6495, 151M21-23

ALAMEDA CO. SURVEYOR
FIELD BOOK LL-501-18



LEGEND:

- ⊙ = FOUND ALAMEDA COUNTY MONUMENT IN WELL 1' BELOW SURFACE
- = FOUND IRON BOLT ON SURFACE
- ▲ = FOUND RAILROAD SPIKE ON SURFACE
- = FOUND CONCRETE NAIL ON SURFACE
- ⊕ = FOUND SCRIBED CROSS ON CONC WALK
- () = RECORD DISTANCE N DISCREPANCY WITH FIELD.
- [] = NON-VERIFIED RECORD DIMENSION.