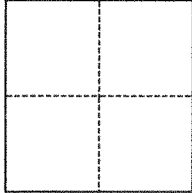


CORNER RECORD

Agency Index BK 144 PG 82Document Number CR 15182City of San Leandro County of Alameda, CaliforniaBrief Legal Description County Survey Monument on Donna St at Dorothy Ave

CORNER TYPE



☐ Government Corner ☒ Control
☐ Meander ☐ Property
☐ Rancho ☐ Other

Date of Survey March 4, 2021

COORDINATES (Optional)

N. _____ E. _____

Elevation _____

Units ☐ Metric ☒ U.S. Survey Foot

Horizontal Datum _____

Zone _____ Epoch Date _____

Vertical Datum _____

☐ Complies with Public Resources Code §§8801-8819☐ Complies with Public Resources Code §§8890-8902PLS Act Ref.: ☐ 8765(d) ☒ 8771 ☐ 8773 ☐ Other:

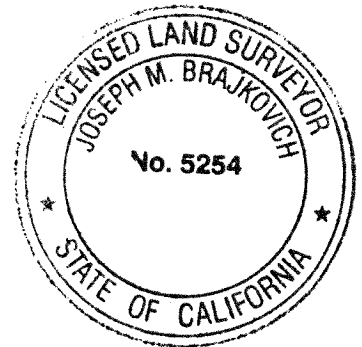
Corner/
Monument: ☒ Left as found ☐ Established ☐ Rebuilt ☒ Pre-Construction
☐ Found and tagged ☐ Reestablished ☒ Referenced ☐ Post-Construction

Narrative of corner identified and monument as found, set, reset, replaced, or removed:

☒ See sheet #2 for description(s):

SURVEYOR'S STATEMENT

This Corner Record was prepared by me or under my direction in conformance with

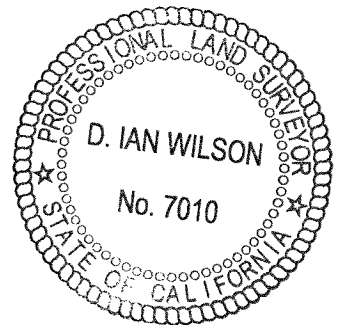
the Professional Land Surveyors' Act on 4-14-2021Signed Joseph M. Brajkovich P.L.S. or R.C.E. No. 5254

COUNTY SURVEYOR'S STATEMENT

This Corner Record was received _____

and examined and filed JAN 12 2022Signed D. Ian Wilson P.L.S. or R.C.E. No. 7010Title ALAMEDA COUNTY SURVEYOR

County Surveyor's Comment _____

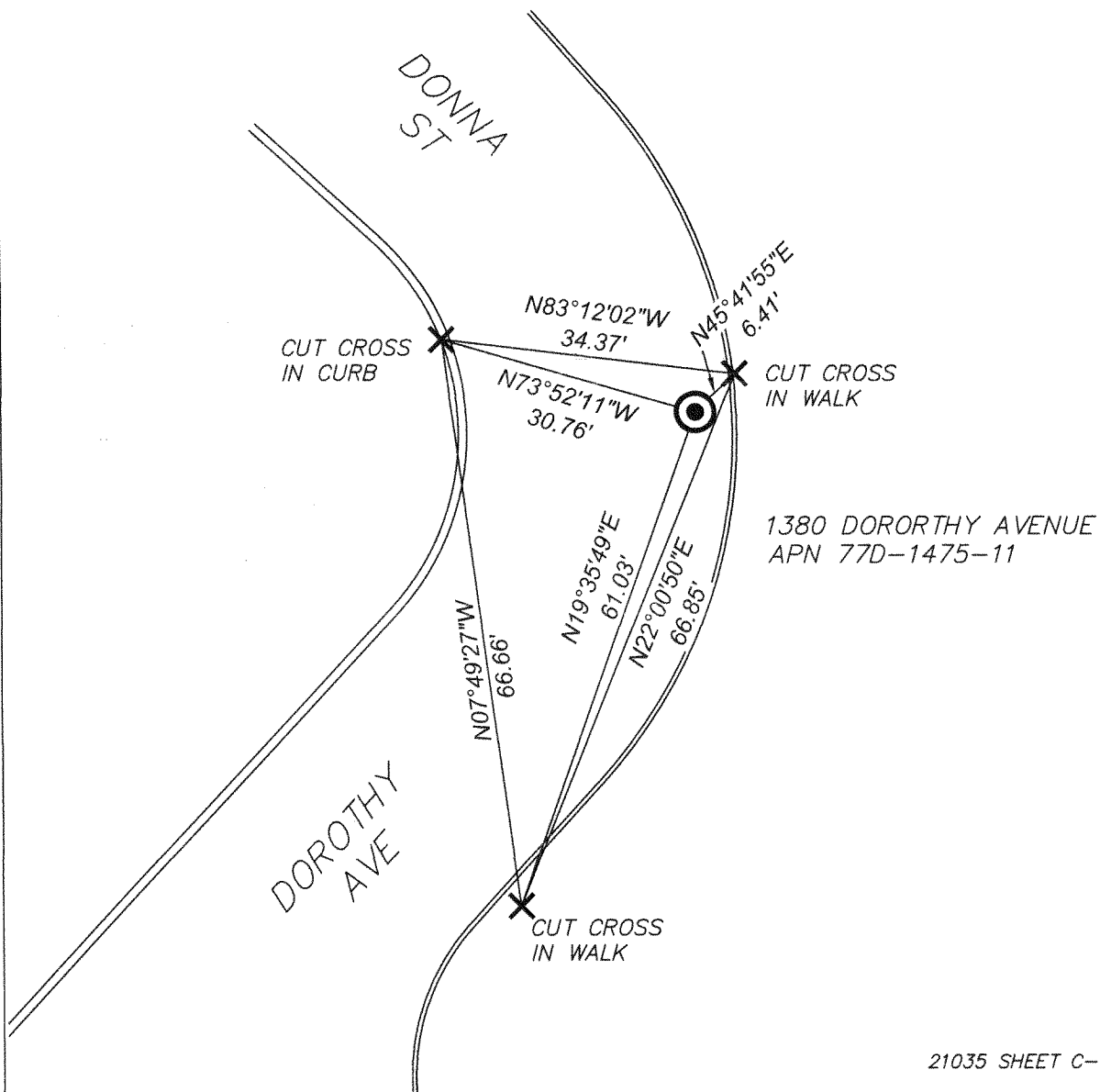




SCALE: 1" = 20'

LEGEND

- #### STREET ADDRESS
- APN ASSESSOR'S PARCEL NUMBER
- ✕ CUT CROSS SET AS DISPLAYED
- ⊙ FOUND SURVEY MONUMENT
(PUNCH IN BRASS DISC IN WELL)



21035 SHEET C-4