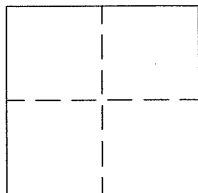


CORNER RECORD

Document Number CR 305 ⁹⁴⁻⁰³ BK 3 CR. 09
 City of OAKLAND County of ALAMEDA, California

Brief Legal Description PRACEL A BOOK 101 OF PARCEL MAPS AT PAGE 83



CORNER RECORD

Government Corner ☐ Control ☐
 Meander ☐ Property ☒
 Rancho ☐ Other ☐
 Date of Survey _____

COORDINATES (Optional)

N. _____
 E. _____
 Zone _____ Datum _____
 Elev. _____

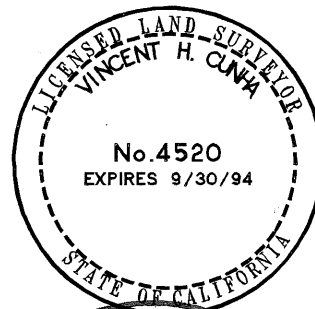
Corner — Left as found ☐ Found and tagged ☐ Established ☒ Reestablished ☐ Rebuilt ☐

Identification and type of corner found: Evidence used to identify or procedure used to establish of reestablish the corner:
SEE BACK

A description of the physical condition of the monument as found and as set or reset: SEE BACK

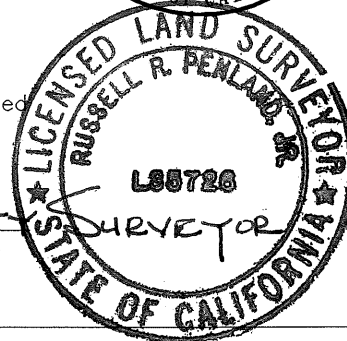
SURVEYOR'S STATEMENT

This Corner Record was prepared by me or under my direction in conformance with
 the Land Surveyors' Act on JUNE 21 19 92.
 Signed Vincent H. Cuna L.S. Number 4520

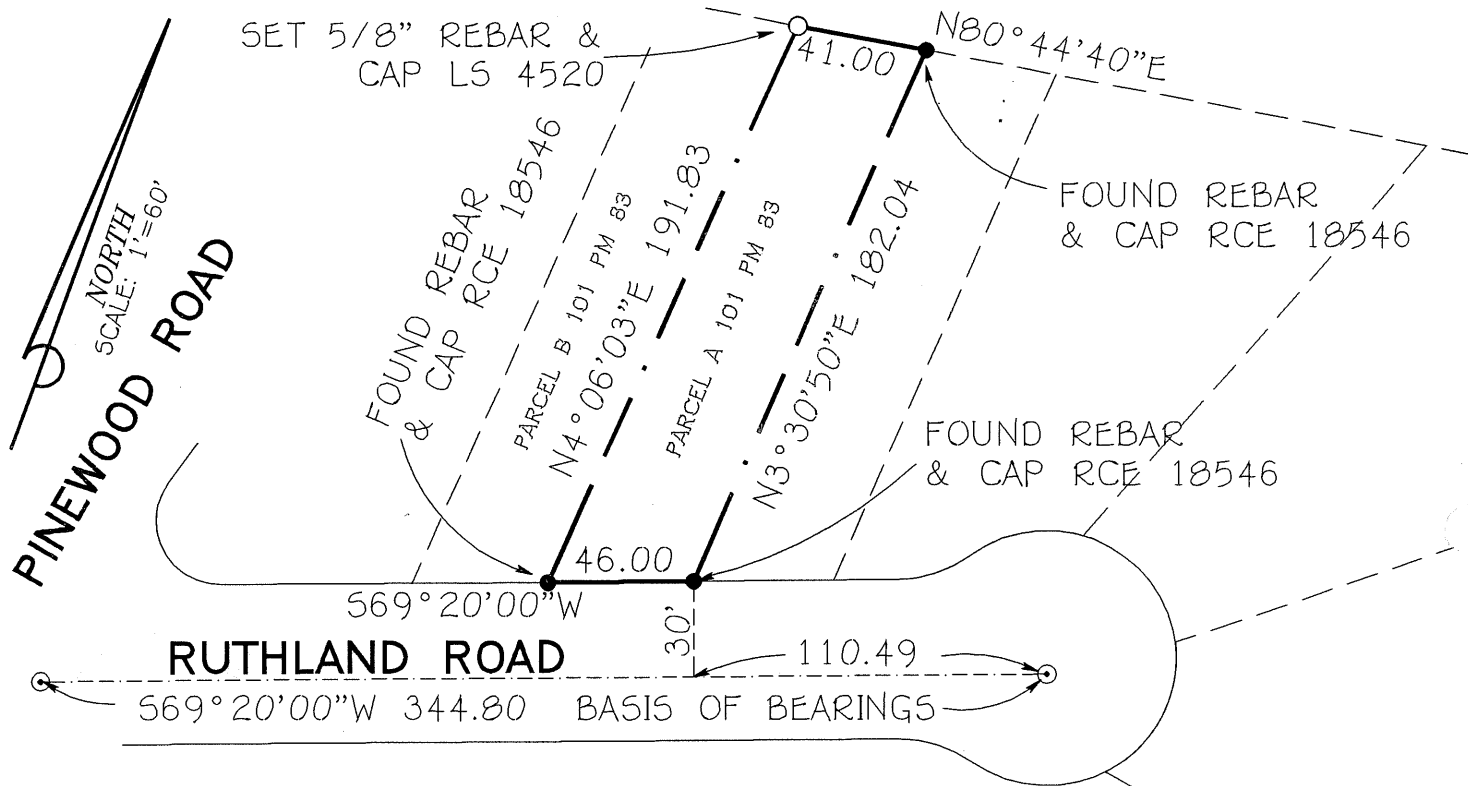


COUNTY SURVEYOR'S STATEMENT

This Corner Record was received 1/4/94 and examined
 and filed 3/21/94
 Signed Russell R. Penland Title Deputy County Surveyor



County Surveyor's Comment _____



LEGEND

- FOUND STANDARD CONCRETE MONUMENT
- FOUND MONUMENT AS NOTED
- SET 5/8" REBAR WITH CAP LS 4520