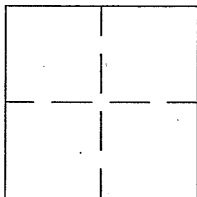


# CORNER RECORD

BK 55 PG 84

APN No. 099 - 015 - 015 - 02 (Optional) Document Number CR 3875  
Unincorporated LIVERMORE County of ALAMEDA, California  
Brief Legal Description N. LIVERMORE AVE



## CORNER TYPE

Government Corner ☐ Control ☐  
Meander ☐ Property ☐  
Rancho ☐ Other ☒  
Date of Survey SEPT. 2, 2009

## COORDINATES (Optional)

N. 442,223  
E. 1,632,924  
Zone ☐ NAD27 ☐ NAD83 ☐  
NAD 83 Epoch ☐  
Elev. ☐

Corner - Left as found ☐ Found and tagged ☐ Established ☐ Reestablished ☒ Rebuilt ☐

In compliance with Section 8771 of the Professional Land Surveyors' Act, this corner record is being filed to  
ESTABLISH ☐ / REESTABLISH ☒ the position of an existing monument PRIOR ☐ / SUBSEQUENT ☒  
to street or highway reconstruction. (Use this portion only when applicable.)

Identification and type of corner found: Evidence used to identify or procedure used to establish or reestablish the corner:

CR 3721 WAS USED AS THE BASIS FOR RE-ESTABLISHING THE  
MONUMENTS ORIGINAL LOCATION, AS FOLLOWS. REF. PTS. 1, 3 & 4  
WERE FOUND UNDISTURBED, PT. 2 WAS DESTROYED, SEE PG. 2

A description of the physical condition of the monument as found and as set or reset:

FOR DETAILS. SET COUNTY DISK STAMPED PN 85T6

N. LIVERMORE STA. 62+00

## SURVEYOR'S STATEMENT

This Corner Record was prepared by me or under my direction in conformance with  
the Land Surveyors' Act on SEPT. 9, 20 09.

Signed Robert A. Machado (L.S.) or R.C.E. Number 7380



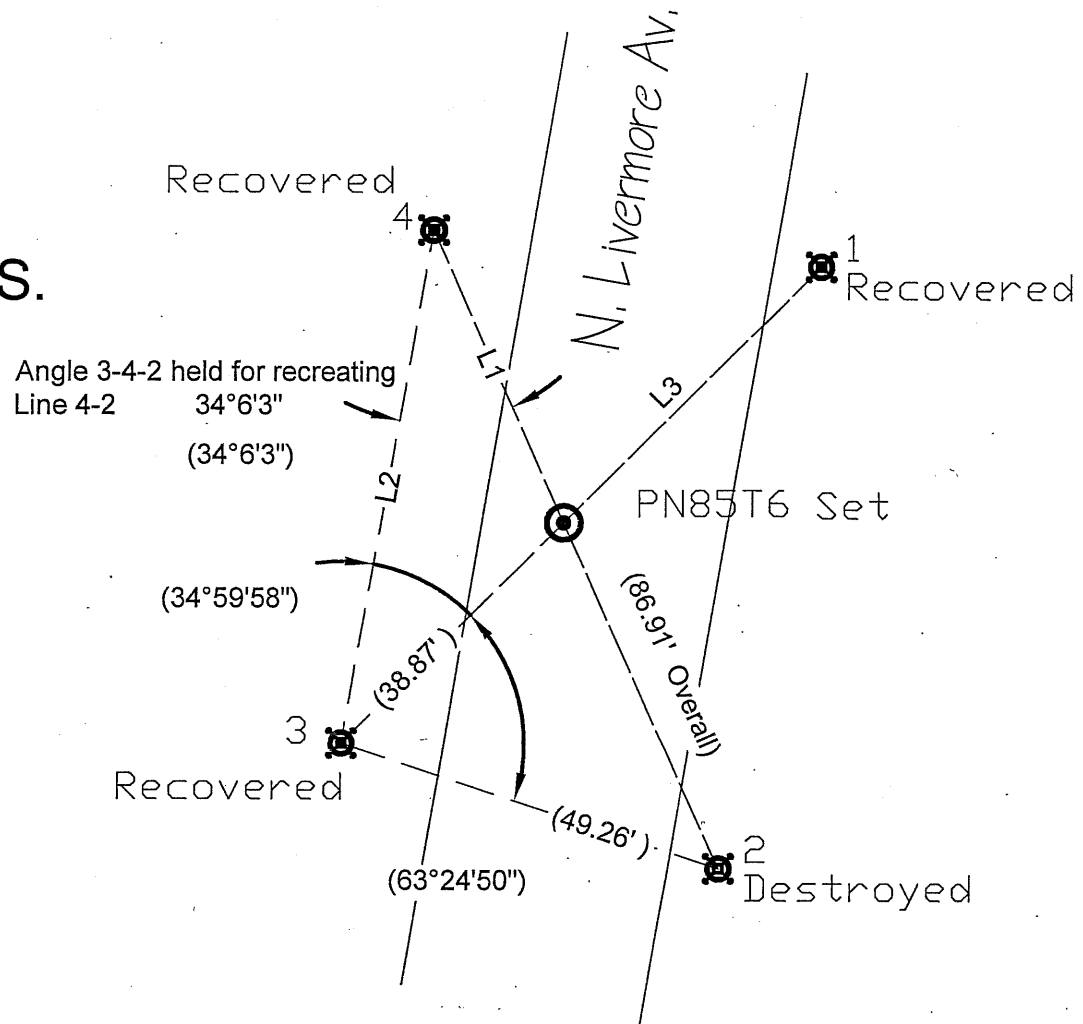
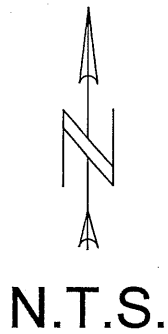
## COUNTY SURVEYOR'S STATEMENT

This Corner Record was received SEPT. 10, 20 09 and examined  
and filed 11-15 20 13.

Signed [Signature] Title County Surveyor



County Surveyor's Comment



### Legend

Found:  $\frac{1}{2}$ " Rebar w/Plastic Cap



Set: Standard County Brass Disk



Measurements from CR 3721 Shown (###.##) typical.

Line	CR 3721	CR 3875
L1	(39.76')	39.76
L2	(64.76')	64.79
L3	(83.76')	83.78

### Credits

Lead: Robert Machado

Assist.: Benjamin Arcibal

Computations: Terri Graumann

CAD: reid

File Name: CR3875\_CR3721\_20090730 CR Page 2 with dxf.dwg

Job#: R23343

### Reference(s)

CR 3721

RS for Alignment of North Livermore Avenue

RS Bk 4 - Pg 55-69, Sht 6 OF 15

Alameda County Monument Id System (PTa...) **PN85T6**