

This map correctly represents a survey made under my direction in conformance with the requirements of Chapter 15 of Division 3 of the Business and Professions Code at the request of the San Jose Water Works in October, 1957.

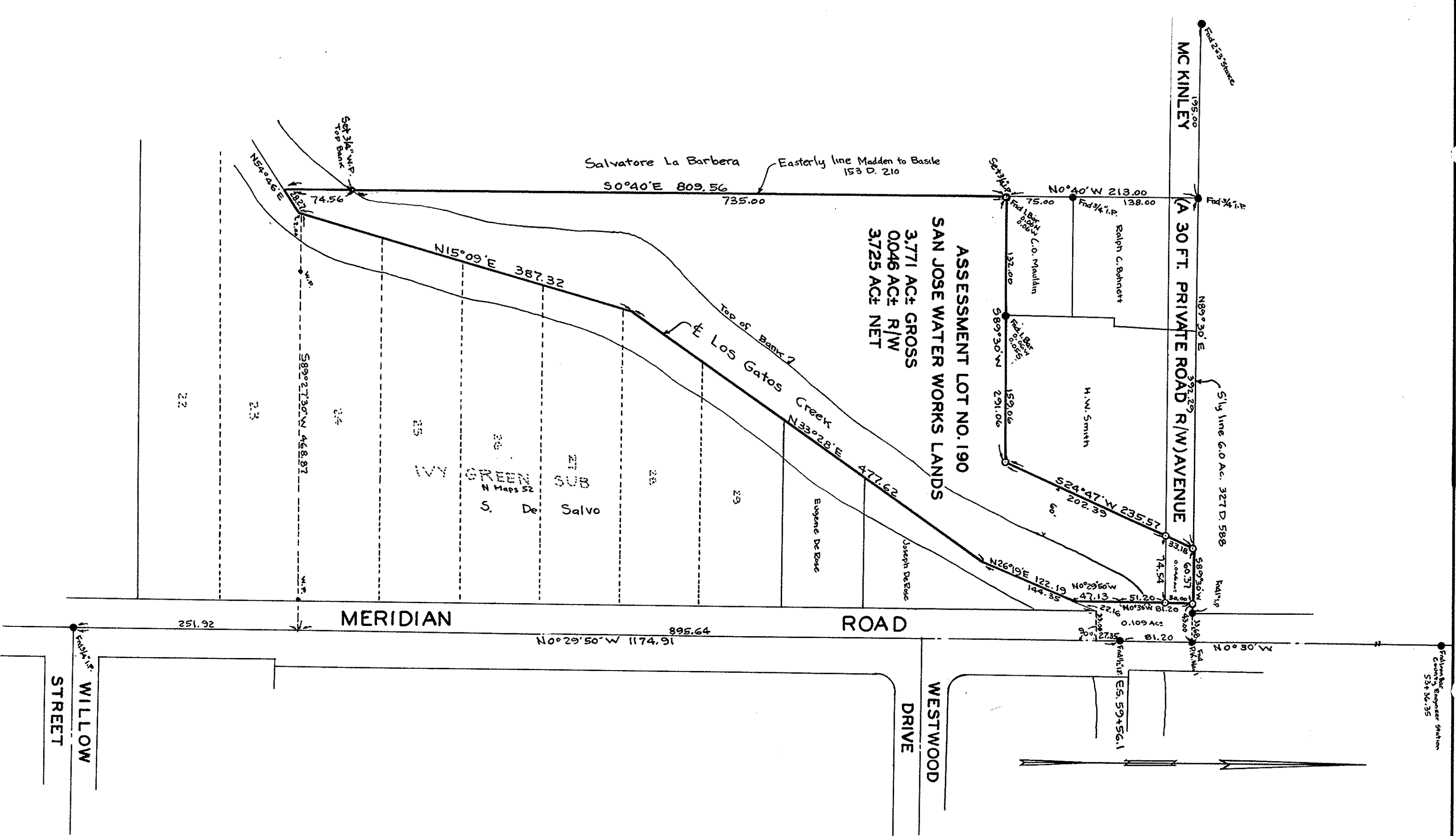
*Charles E. Thomas*  
Registered Civil Engineer No. 25726

The bearing (N89°30'E) of the southerly line of the 6.0 acre tract as described in Decree of Distribution recorded in Book 327 of Deeds at page 588 was used as basis of bearings shown upon this map. All distances and dimensions are shown in feet and decimals thereof. • Indicates monument found.

This map has been examined for conformance with the requirements of Chapter 15 of Division 3 of the Business and Professions Code this 19th day of Nov 1957.

James B. Enoch, Acting County Surveyor  
By *[Signature]* Deputy

1415587  
Filed for record this 16 day of Dec 1957 at 9:07 A.M.  
in Book 89 of Maps at page 6 at the request of Mark Thomas & Co.  
\$500  
By *[Signature]* Sgl C. Tully, County Recorder



RECORD OF SURVEY  
MAP NO. 137  
SHOWING  
SAN JOSE WATER WORKS LANDS  
ASSESSMENT LOT NO. 190  
BEING A PORTION OF LOTS 40 & 41 LOS COCHES RANCHO  
SANTA CLARA COUNTY  
CALIFORNIA  
OCTOBER 1957

MARK THOMAS & CO.  
CIVIL ENGINEERS & SURVEYORS  
SAN JOSE  
CALIFORNIA