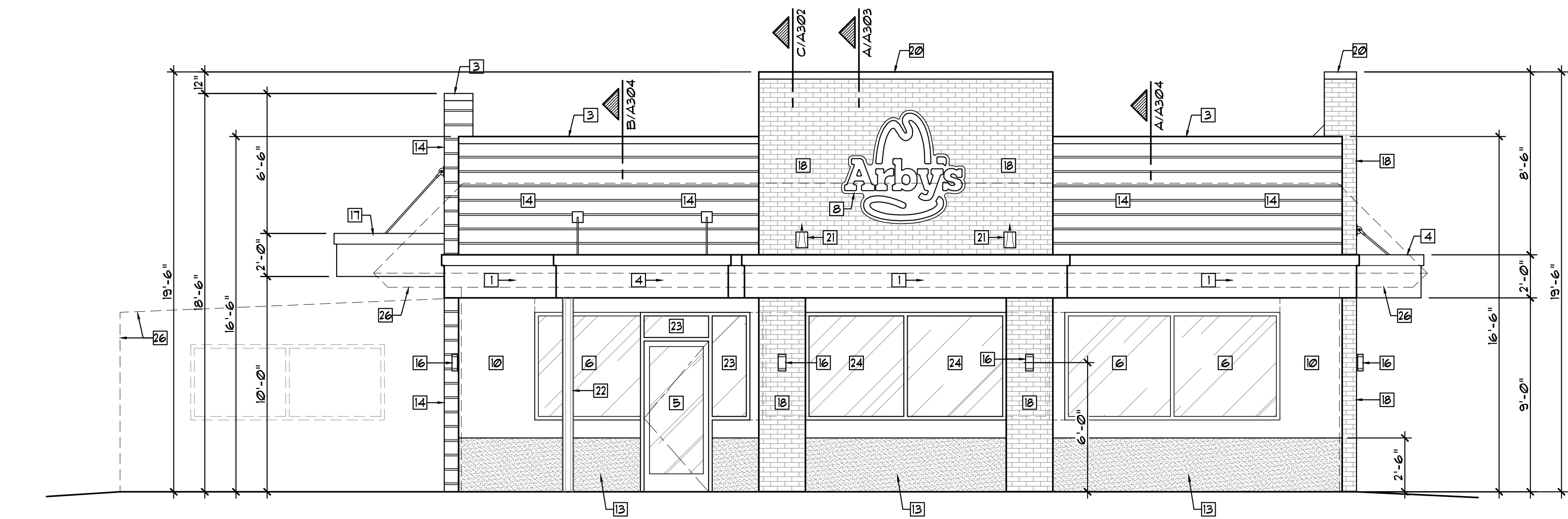
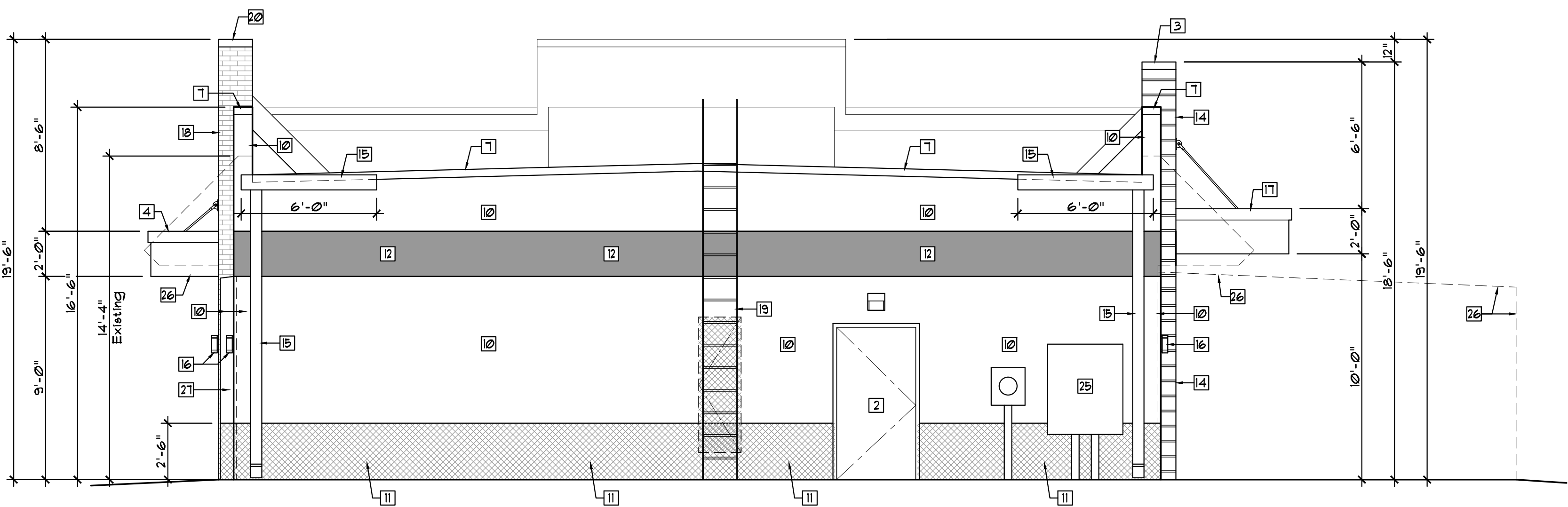


A
A201
North Elevation
Scale: 1/4"=1'-0"



B
A201
East Elevation
Scale: 1/4"=1'-0"



C
A201
West Elevation
Scale: 1/4"=1'-0"

General Notes

- The Contractor Shall Not Perform Any Structural Demolition Prior To Field Verification From The Structural Engineer.
- These Drawings Represent An Approximation Of Existing Conditions. The Contractor Shall Notify The Architect Of Any Discrepancies Immediately Upon Uncovering Of The Existing Structural Conditions.
- All Exterior Surfaces Shall Be Cleaned, Patched, Repaired As Required And Prepared To Receive New Paint Per Drawings And Utilizing Arby's Paint Specifications.
- The Contractor Shall Provide Blocking For Signage As Directed By Suppliers.
- The Contractor Shall Provide All Flashing, Assemblies, Details, Etc.
- Verify And Maintain All Existing Roof Drain/Downspout Assemblies.
- The Contractor Shall Provide All Necessary Details As Required By The EIFS Manufacturer In Order To Maintain The Warranty. Provide All Backer Rods, Sealant Locations, Flashing Minimum Coverages, Etc.
- Provide Dryvit EIFS System Or Approved Equal, System To Have A Water Management System With Appropriate Details. The EIFS Application Shall Be Installed Over A Water-Resistive Barrier Complying W/ASTM E2570, With A Means Of Draining Moisture To The Exterior. Provide Submittal With Proposed System And Details Indicated. All EIFS Work Shall Be Performed Per Manufacturers Requirements To Maintain Warranty.
- The Contractor Shall Review All New EIFS, Paint, & Coping Cap Colors And Their Locations With The Owners Construction Manager Prior To Proceeding With The Work.
- Exterior Light Fixtures That Protrude 4" Or More From The Wall Surface At The Base Of The Wall Shall Be Mounted 1" High Or Have The Walking Surface Below Restricted To Prevent Non-Compliance With ADA Protruding Objects Requirements.

Paint Legend

- PAINT COLOR #1**
Sherwin Williams To Match Dryvit #310 "China White".
Satin Finish, Prepare And Prime As Required.
- PAINT COLOR #2**
Sherwin Williams #2808 "Rookwood Dark Brown". Satin Finish. Prepare & Prime As Required.
- PAINT COLOR #3**
Sherwin Williams #6869 "Stop". Satin Finish. Prepare & Prime As Required.
- PAINT COLOR #4**
Sherwin Williams #7024 "Functional Gray". Satin Finish. Prepare & Prime As Required.

Exterior Finish Notes

EXTERIOR INSULATION AND FINISH SYSTEM (E.I.F.S.)
W/SIM. BRICK PATTERN, COLOR #1- FRONT TOWER
Simulated Brick Stencil Pattern W/Dryvit 23Pt. 1/2"
"Brooklyn Brick" Template - Color #1: #310 "China White". Grout Color: #ARBY111009, NCB.
Coping Color #3.

EXTERIOR INSULATION AND FINISH SYSTEM (E.I.F.S.)
COLOR #1
Dryvit - Color: #310 "China White" Sandblast
Texture. Coping Color #1.

EXTERIOR INSULATION AND FINISH SYSTEM (E.I.F.S.)
COLOR #2
Dryvit - Color: To Match Sherwin Williams #2808
"Rookwood Dark Brown". Sandblast Texture.
Coping Color #2.

PAINT COLOR #1
Sherwin Williams To Match E.I.F.S. Color
#1 Dryvit #310 "China White". Satin
Finish, Prepare And Prime As Required.

PAINT COLOR #2
Sherwin Williams #2808 "Rookwood Dark
Brown". Satin Finish. Prepare & Prime As
Required.

PAINT COLOR #3
Sherwin Williams #6869 "Stop". Satin Finish.
Prepare & Prime As Required.

PAINT COLOR #4
Sherwin Williams #7024 "Functional Gray".
Stain Finish. Prepare & Prime As Required.

PREFABRICATED 2'-0" HIGH COLOR BAND
Color: Prefinished Metal, Red. Provided By
Signage Manufacturer.

6" PREFABRICATED POSTS
Product Code: 9840-80957R
Product Name: FC SD RAL 8017
CHOC. BROWN

Signage Notes

- All Signage Work Shall Be Performed Under A Separate Permit.
- Signage Vendor To Verify Local Signage Ordinances Or Restrictions With Owner Prior To Starting Work.
- Contractor To Provide New Plywood Backing And Support Blocking As Required For Mounting Of Signage. Coordinate Installation With Signage Vendor And Owner's Construction Manager.

Keynote Schedule

Mark	Description
1	New 2'-0"H. Prefab. Metal Signage Band, Red, By Owner. Contractor To Coordinate Installation.
2	New Metal Door & Frame, Paint Color #4, Gray. Refer: Exterior Finish Notes.
3	New Metal Coping, Paint: Color #2, Brown. Refer: Exterior Finish Notes.
4	New 2'-0"H. Prefab. Entrance Canopy Provided And Installed By Canopy Manufacturer. Contractor To Provide New Support Blocking & Coordinate Installation. See Note.
5	New Storefront Glass Doors Into New Or Existing Frame. Provide New ADA Closers, Push/Pull, Hardware, Threshold And Panic Hardware. Match Color Of Existing Storefront Framing. Refer: Door Schedule.
6	Existing Glazing Unit To Remain, Typical. Clean Frames, Replace Broken Seal Units, Typical.
7	New Metal Coping, Paint: Color #1, White. Refer: Exterior Finish Notes.
8	New 5'-0" High Backlit 'Hat' Signage By Owner. Contractor To Coordinate Installation.
9	New 2'-6" High Backlit Signage By Owner. Contractor To Coordinate Installation.
10	New EIFS, On 1 1/2" Rigid Insulation Over Tyvek Stucco Wrap Over Exterior Existing Masonry Wall Surface, Patch And Prepare As Required. EIFS Color #1, Refer: Exterior Finish Notes.
11	New Painted Wainscot Over New EIFS, On 1 1/2" Rigid Insulation Over Tyvek Stucco Wrap Over Exterior Sheathing Over Existing Masonry Wall Surface, Patch And Prepare As Required. Paint: Color #4, Gray, Ref: Exterior Finish Notes.
12	New Painted Accent Band Over New EIFS, Paint Color #3, Refer: Exterior Finish Notes.
13	New Painted Wainscot Over New EIFS, On 1 1/2" Rigid Insulation Over Tyvek Stucco Wrap Over Exterior Sheathing Over Existing Masonry Wall Surface, Patch And Prepare As Req'd. Paint: Color #2, Brown, Ref: Exterior Finish Notes.
14	New EIFS, On 1 1/2" Rigid Insulation W/1" Horizontal "V" Reveals @ 8"oc, Over Tyvek Stucco Wrap Over Exterior Sheathing Over New 2x Framing. EIFS Color #2. Refer: Exterior Finish Notes.
15	New Collector Heads, Downspouts And Gutter System. Prepare And Paint: Color #1. Ref: Exterior Finish Notes.
16	New LED Exterior Performance Wall Sconce, Refer: Reflected Ceiling Plan And Light Fixture Schedule.
17	New 2'-0"H. Prefab. Drive-Thru Canopy, Red. Provided & Installed By Canopy Manufacturer. Contractor To Provide New Support Blocking & Coordinate Installation.
18	New EIFS, W/Brick Stencil Pattern, Color #1, Over 1 1/2" Rigid Insulation Over Tyvek Stucco Wrap Over Exterior Sheathing Over New 2x Framing. Verify Blocking & Electrical Requirements For New Hat Signage. Refer: Wall Sections And Exterior Finish Notes.
19	New Steel Ladder, Paint: Color #4, Gray. Provided By Owner And Installed By Contractor. Refer: Exterior Finish Notes.
20	New Metal Coping, Paint: Color #3, Red. Typical At Brick Stencil Tower Elements, Refer: Exterior Finish Notes.
21	New Exterior Performance Wall Sconce, Refer: Reflected Ceiling Plan And Light Fixture Schedule.
22	6" Dia. Steel Pipe Columns, Prime, Prepare And Paint. Refer: Exterior Finish Notes.
23	Modify Exist. Glazing System To Accommodate New Config. Provide New 1" Insulated Glazing & Mullions As Required.
24	New 1" Insulated Glazing Units In Aluminum Storefront System To Match Existing. Color To Match Existing.
25	New MDF Panel, Paint: Color #4, Gray, Ref: Ext. Finish Notes.
26	Existing Structure And/Or Existing Overhang To Be Removed.
27	Existing CMU Pilaster To Remain. Wrap W/EIFS And Slope Top To Drain Away From Building.