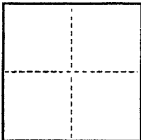


CORNER RECORD

CR 332

COUNTY OF ALAMEDA T. \_\_\_\_\_ R. \_\_\_\_\_ MERIDIAN \_\_\_\_\_ CALIFORNIA  
CORNER TYPE: GOV'T. CORNER ☐ MEANDER ☐ RANCHO ☐ CONTROL ☐ OTHER ☐  
CORNER IDENTIFICATION — DATE OF VISIT OCTOBER 1 1992



CORNER — LEFT AS FOUND ☐ FOUND AND TAGGED ☒ REESTABLISHED OBLITERATED CORNER ☐ REBUILT ☐

PHYSICAL DESCRIPTION OF CORNER FOUND; EVIDENCE AND METHOD USED TO IDENTIFY OR REESTABLISH

- Found original City of Oakland concrete monuments in Perth Place formerly Wilart Place, as shown on "Resubdivision of the Map of Claremont Heights, Subdivision No.1 (4 M. 62).

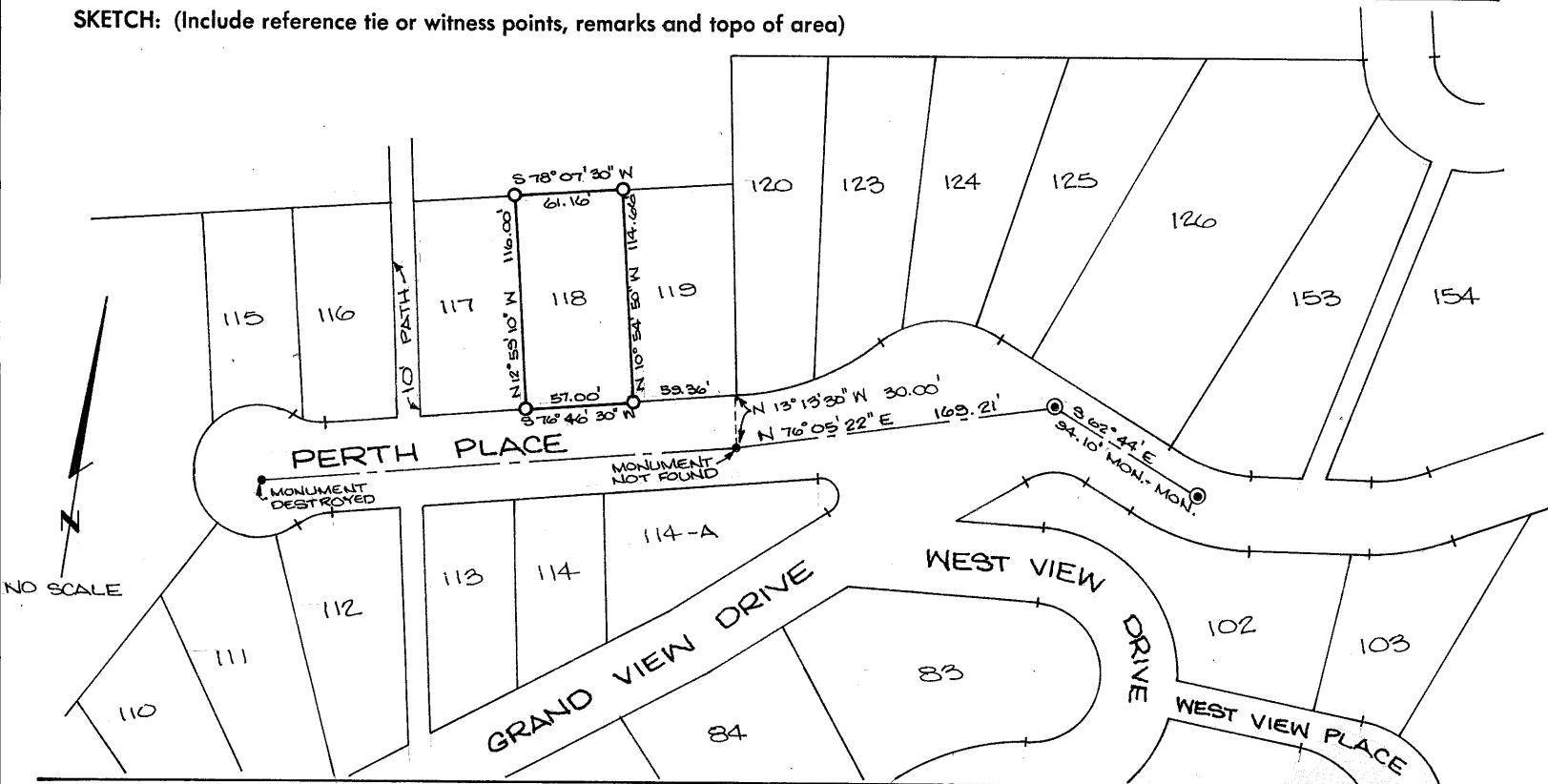
PHYSICAL DESCRIPTION OF MONUMENTS REBUILT OR PERPETUATED

- Set 5/8" rebar with plastic cap, tagged L.S. 5252, at the corners of Lot 118, per record data, "Resubdivision of the Map of Claremont Heights, Subdivision No.1" (4 M. 62).

CALIFORNIA COORDINATE SYSTEM ORDER: FIRST ☐ SECOND ☐ THIRD ☐  
STATIONS USED: NGS (USC & GS) ☐ STATE ☐ COUNTY ☐ OTHER ☐ STATION \_\_\_\_\_ STATION \_\_\_\_\_  
ZONE \_\_\_\_\_ ELEVATION \_\_\_\_\_ NORTHINGS (Y) \_\_\_\_\_ EASTINGS (X) \_\_\_\_\_

(Fold)

SKETCH: (Include reference tie or witness points, remarks and topo of area)



SURVEYOR'S CERTIFICATE

THIS CORNER RECORD WAS PREPARED BY ME OR UNDER MY DIRECTION IN CONFORMANCE WITH THE LAND SURVEYORS ACT ON October 12 1992

SIGNED: \_\_\_\_\_

L.S. or R.C.E. No.: 5252



COUNTY SURVEYOR'S CERTIFICATE

THE CORNER RECORD WAS RECEIVED AND EXAMINED AND FILED

ON October 12 1992

AT Russell R. Penland

DEPUTY COUNTY SURVEYOR

DOCUMENT No. \_\_\_\_\_

STATEMENT ON BACK OF SHEET  
L85726

YES ☐

NO ☒