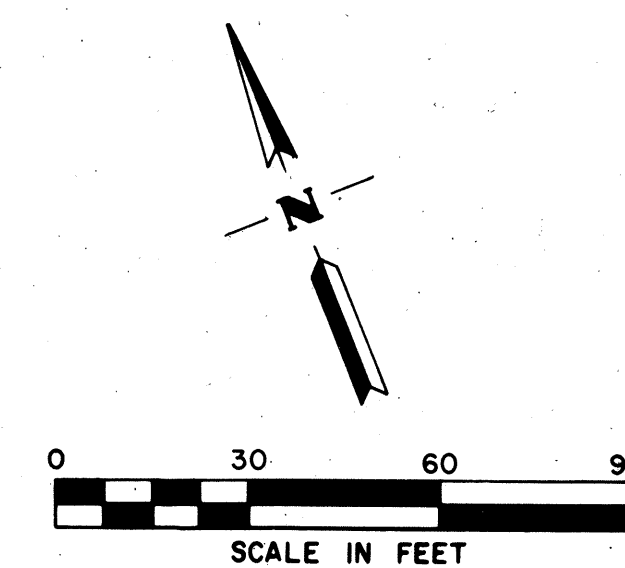


PM 5344 Map BK 178 Pg 2



VERTICAL BOUNDARIES FOR PARCEL 1
 TOP PLANE: ELEVATIONS OF 14.91', 14.91', 17.53',
 BOTTOM PLANE: NO VERTICAL LIMIT

LEGEND	
---	EXTERIOR BOUNDARY LINE
()	RECORD DIMENSION
---	PARCEL LINE
---	MONUMENT LINE
⊙	FOUND CITY MONUMENT
(M-M)	MONUMENT TO MONUMENT

PARCEL MAP NO. 5344

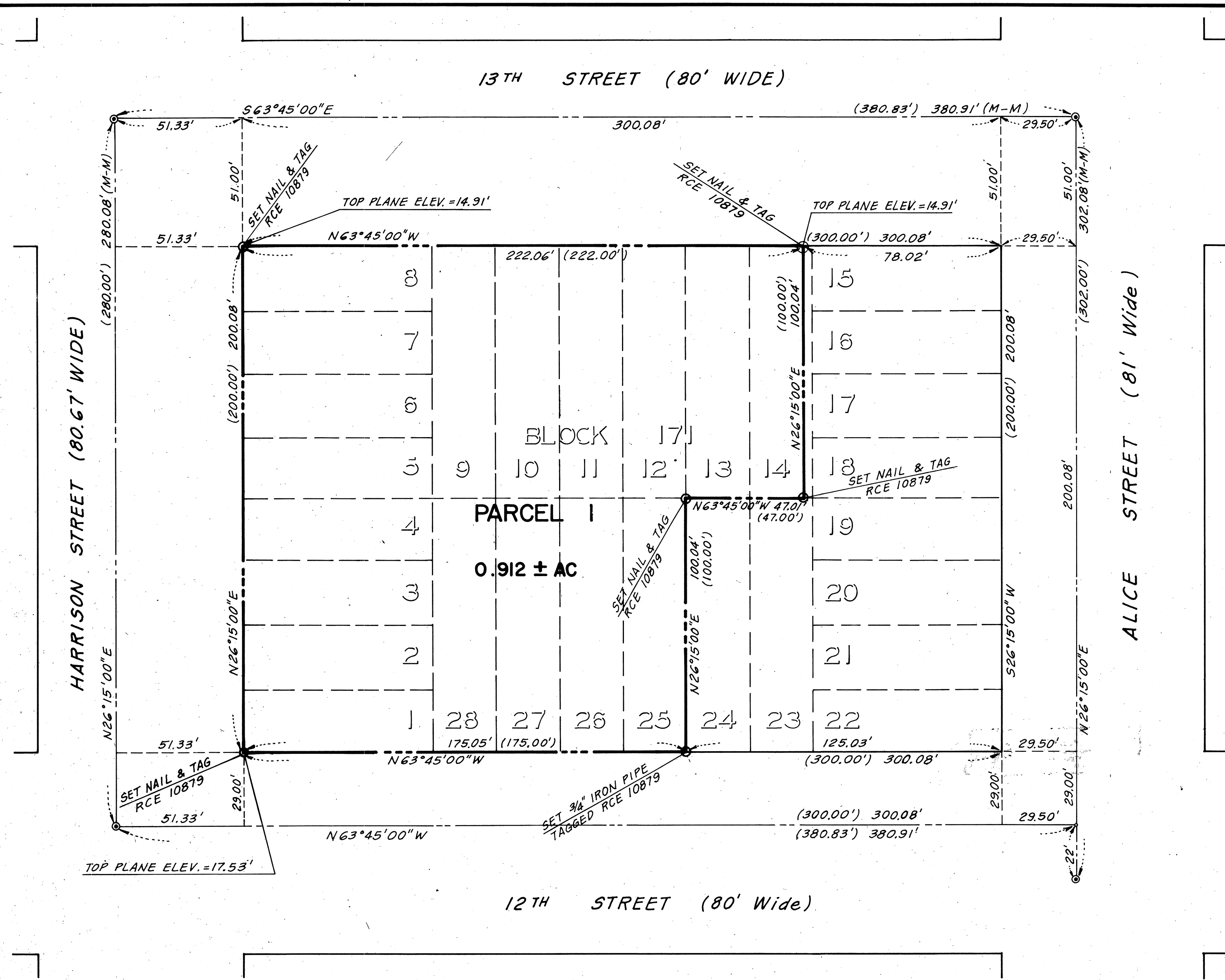
ALL OF LOTS 1 THRU 13, 25 THRU 28, AND A PORTION OF LOT 14, BLOCK 171, AS SHOWN ON THE MAP ENTITLED "THE COMPLETE MAP OF OAKLAND", FILED JUNE 16, 1870 IN BOOK 1 OF MAPS AT PAGE 21 OFFICIAL RECORDS OF ALAMEDA COUNTY.

FOR: EAST BAY ASIAN LOCAL DEVELOPMENT CORPORATION
 CITY OF OAKLAND
 ALAMEDA COUNTY, CALIFORNIA

BISSELL & KARN, INC.
 CIVIL ENGINEERS
 SAN LEANDRO, CALIFORNIA
 APRIL 1988

JOB NO. 8708132.00
 SHEET 2 OF 6 SHEETS

BR 178 Pg 2



OWNER AND SUBDIVIDER
 EAST BAY ASIAN LOCAL DEVELOPMENT CORPORATION,
 310 - 8TH STREET, SUITE 309, OAKLAND, CA 94612

ENGINEER
 BISSELL & KARN, INC.
 2551 MERCED STREET
 SAN LEANDRO, CA 94577

BASIS OF BEARINGS
 FOUND CITY MONUMENT LINE ALONG 13TH STREET
 BETWEEN HARRISON STREET AND ALICE STREET TAKEN
 AS N 63° 45' 00" W.

BENCH MARK:
 CUT SQUARE AT THE MID POINT RETURN AT THE
 SOUTHWEST CORNER OF 15TH STREET
 AND HARRISON STREET.
 ELEVATION = 31.99 CITY OF OAKLAND DATUM