



Beauty | Economy | Sustainability

Kevin Reff, RLA  
KITA Sustainable Designs, LLC

2101 Masters Drive  
Springfield, TN 37172  
(615) 469 - 1222 Ofc.  
(615) 594 - 7333 Cell.

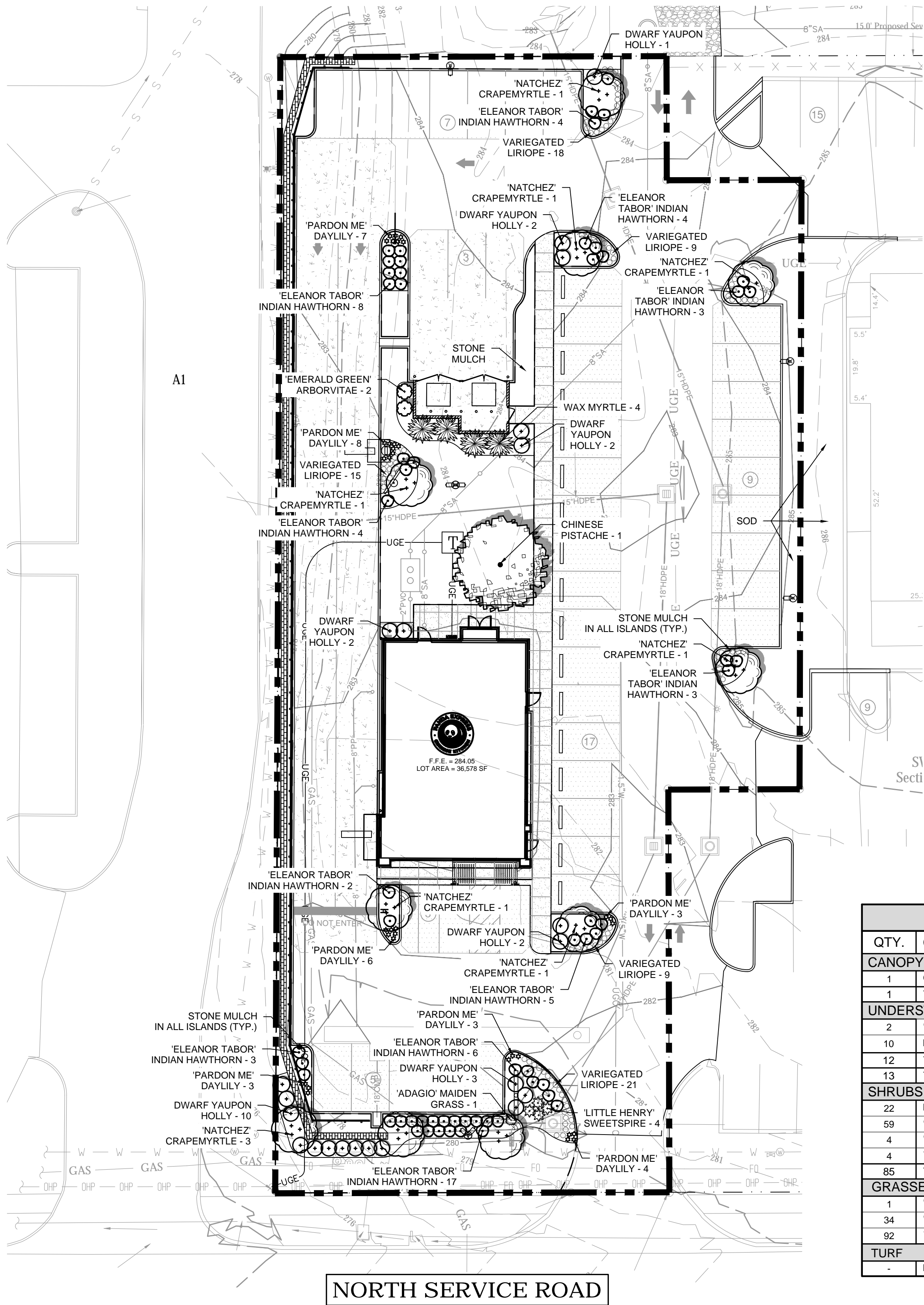
krreff@kitadesign.biz

### PANDA EXPRESS LANDSCAPE NOTES:

1. WHEN APPLICABLE, IT IS THE CONTRACTOR'S RESPONSIBILITY TO PROTECT EXISTING TREES TO REMAIN. NO HEAVY EQUIPMENT SHOULD BE PERMITTED TO OPERATE OR BE STORED, NOR ANY MATERIALS TO BE HANDLED OR STORED, WITHIN THE DRIPLINES OF TREES OUTSIDE THE LIMIT OF GRADING.
2. THE QUANTITIES INDICATED ON THE PLANT LIST AND PLAN ARE PROVIDED FOR THE BENEFIT OF THE CONTRACTOR. THE CONTRACTOR SHALL BE RESPONSIBLE FOR HIS OWN QUANTITY CALCULATIONS AND THE LIABILITY WHICH PERTAINS TO THOSE QUANTITIES AND TO ANY RELATED CONTRACT DOCUMENTS AND/OR PRICE QUOTATIONS. QUESTIONS SHOULD BE DIRECTED TO THE LANDSCAPE ARCHITECT.
3. ALL PLANT MATERIALS SHALL BE NURSERY GROWN, GRADE "A" QUALITY, UNLESS OTHERWISE NOTED AND SHALL COMPLY WITH THE AMERICAN STANDARD FOR NURSERY STOCK: ANSI Z-60.1, LATEST EDITION, FOR SIZE AND QUALITY.
4. NO SUBSTITUTIONS AS TO TYPE, SIZE, OR SPACING OF PLANT MATERIALS SPECIFIED ON THIS PLAN MAY BE MADE WITHOUT THE APPROVAL OF THE LANDSCAPE ARCHITECT. KITA SUSTAINABLE DESIGNS, LLC (615) 469-1222.
5. THE CONTRACTOR IS TO VERIFY THE EXACT LOCATION OF ALL EXISTING UTILITIES AND TO PROTECT UTILITIES THAT ARE TO REMAIN. THE CONTRACTOR SHALL REPAIR ANY DAMAGE ACCORDING TO LOCAL STANDARDS AT THE CONTRACTOR'S EXPENSE. COORDINATE ALL CONSTRUCTION WITH THE APPROPRIATE UTILITY COMPANY.
6. STABILIZE ALL DISTURBED AREAS WITH SOD. PRIOR TO INSTALLATION, CONTRACTOR TO COORDINATE WITH PANDA EXPRESS PROJECT MANAGER TO VERIFY SOD TYPE TO BE USED. ROLL ALL SOD AFTER PLACING.
7. SOIL USED FOR PLANTING SHALL CONSIST OF (5) PARTS TOPSOIL, (1) PART SAND AND (2) PARTS ORGANIC MATTER, MIXED WITH 1 POUND OF FERTILIZER PER CUBIC YARD.  
A. SAND SHALL BE CLEAN MASONRY SAND.  
B. ORGANIC MATTER SHALL BE PEAT MOSS, OR WELL COMPOSTED PINE BARK, OR APPROVED EQUAL AND SHALL BE FINELY GROUND AND FREE OF WEEDS.  
C. ALL FERTILIZER SHALL BE 10-10-10 WITH MINOR ELEMENTS. FERTILIZER SHALL HAVE 40-50% OF ITS TOTAL NITROGEN IN A WATER INSOLUBLE FORM.
8. PRE-EMERGENT HERBICIDE SHALL BE APPLIED TO ALL PLANT BEDS AND SOD AREAS PRIOR TO INSTALLATION. TREFLAN OR AN APPROVED EQUAL SHALL BE USED.
9. ALL PLANT BEDS SHALL HAVE A MINIMUM OF 3" DEEP MULCH. MULCH SHALL BE RIVER ROCK (OR LOCAL EQUAL), 1" - 1.5" DIAMETER INSTALLED OVER PERMEABLE WEED BARRIER.
10. IT IS THE LANDSCAPE CONTRACTOR'S RESPONSIBILITY TO CONFIRM MATERIAL QUANTITIES. IN THE EVENT OF A DISCREPANCY, THE QUANTITIES SHOWN ON THE PLAN SHALL TAKE PRECEDENCE OVER QUANTITIES SHOWN ON THE PLANT LIST.
11. PRIOR TO FINAL PAYMENT, THE LANDSCAPE CONTRACTOR SHALL PROVIDE THE OWNER WITH COMPLETE WRITTEN INSTRUCTIONS ON PROPER CARE OF ALL SPECIFIED PLANT MATERIALS.
12. THE LANDSCAPE INSTALLATION SHALL BE COORDINATED WITH THE IRRIGATION INSTALLATION WHEN APPLICABLE. IRRIGATION TO BE DESIGN-BUILD BY THE G.C.
13. THE LANDSCAPE CONTRACTOR SHALL MAINTAIN POSITIVE DRAINAGE AWAY FROM STRUCTURES AND TAKE SPECIAL CARE TO INSURE THAT BED PREPARATION DOES NOT INHIBIT DRAINAGE.
14. ALL LAWN AREAS SHALL BE CULTIVATED TO A DEPTH OF 4" PRIOR TO SODDING. PREPARED TURF BEDS SHALL BE FREE FROM STONES OVER 2" DIAMETER, WEEDS AND OTHER DELETERIOUS MATERIAL.
15. THE LANDSCAPE CONTRACTOR SHALL RAKE SMOOTH ALL SOD AREAS PRIOR TO INSTALLATION.
16. THE CONTRACTOR SHALL BE RESPONSIBLE FOR BACKFILLING BEHIND THE CURB SO GRADE IS LEVEL WITH TOP OF CURB.
17. CUT AWAY ROPES OR WIRES FROM B&B PLANTS. PULL BACK BURLAP FROM TOP OF ROOT BALL. DO NOT ALLOW BURLAP TO BE EXPOSED AT SURFACE. TOTALLY REMOVE BURLAP IF IT IS SYNTHETIC.
18. IF CONTAINER GROWN PLANTS SHOW SIGNS OF BEING ROOT BOUND, SCORE ROOTS VERTICALLY.
19. ALL PLANT MATERIAL SHALL BE GUARANTEED FOR ONE YEAR FROM DATE OF FINAL ACCEPTANCE.
20. ALL REPLACEMENTS SHALL BE OF THE SAME TYPE, SIZE, AND QUALITY AS SPECIFIED ON THE PLANT LIST, UNLESS APPROVED OTHERWISE IN WRITING BY THE LANDSCAPE ARCHITECT.
21. ANY MATERIAL THAT IS DEEMED TO BE 25% DEAD OR MORE SHALL BE CONSIDERED DEAD, AND MUST BE REPLACED AT NO CHARGE. A TREE IS CONSIDERED DEAD WHEN THE MAIN LEADER HAS DIED BACK, OR MORE THAN 25% OF THE CROWN IS DEAD.
22. REPLACEMENTS SHALL BE MADE DURING THE NEXT PLANTING SEASON UNLESS THE LANDSCAPE CONTRACTOR AGREES TO AN EARLIER DATE.  
PLANTING DATES  
SPRING: MARCH 15 - APRIL 15  
FALL: OCTOBER 1 - NOVEMBER 30
23. THE LANDSCAPE CONTRACTOR WILL NOT BE RESPONSIBLE FOR PLANT MATERIAL THAT HAS BEEN DAMAGED BY VANDALISM, FIRE, RELOCATION, WILDLIFE, THEFT, OR OTHER ACTIVITIES BEYOND THE LANDSCAPE CONTRACTOR'S CONTROL.
24. GENERAL CONTRACTOR TO COORDINATE AND BE RESPONSIBLE FOR WATERING ALL PLANTS AND TURF AREAS AFTER PLANTING UNTIL IRRIGATION SYSTEM IS OPERABLE.
25. CONTRACTOR TO IRRIGATE ALL NEW LANDSCAPE PLANTINGS AND LAWN AREAS WITH AN AUTOMATED UNDERGROUND IRRIGATION SYSTEM. IRRIGATION SYSTEM TO BE DESIGN-BUILD BY G.C.
26. IRRIGATION TO HAVE A SEPARATE METER.
27. PLANT MATERIAL SHALL BE APPROPRIATE FOR THE APPLICABLE USDA PLANT HARDINESS ZONE.
28. SPECIES MUST MEET BOTH MINIMUM CALIPER OR GALLON SIZE AND HEIGHT IF LISTED.
29. LANDSCAPE CONTRACTOR TO MAINTAIN LANDSCAPING FOR 60 DAYS AFTER TURNOVER. MAINTENANCE SHALL INCLUDE MOWING, EDGING AND TRIMMING SHRUBS.

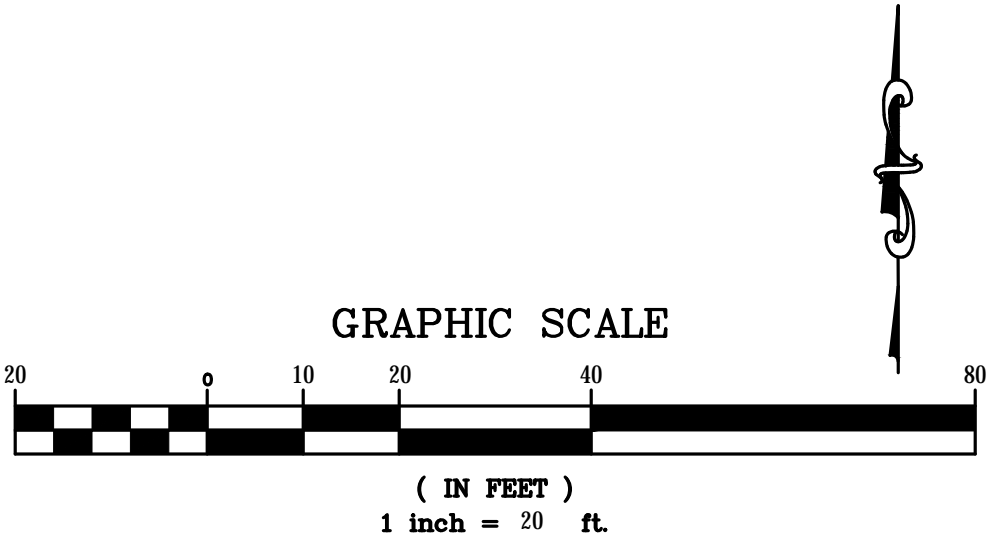
### LANDSCAPE BED NOTES:

1. ALL LANDSCAPE BEDS SHOULD BE PREPARED 3" BELOW GRADE PRIOR TO START.
2. APPLY PRE-EMERGENT TO ALL LANDSCAPE BEDS AS SUGGESTED PER MANUFACTURER'S SPECIFICATIONS. (SEE NOTE #8).
3. APPLY PERMEABLE WEED BARRIER TO ALL LANDSCAPE BEDS.
4. INSTALL RIVER ROCK MUCH (OR LOCAL EQUAL) (1" - 1.5" DIAMETER), APPROXIMATELY 3" DEEP IN ALL LANDSCAPE BEDS OVER WEED BARRIER.



LANDSCAPE CALCULATIONS		
SITE AREA:	36,560 SF	(0.84 AC)
ZONING:		
	REQUIRED	PROVIDED
LANDSCAPE AREA (5% MIN.)	5%	5.3%
LANDSCAPE AREA:	1,828 SF	1,944 SF
STREET FRONTAGE:		
NORTH SERVICE RD.: (78')		
TREES: (1 PER 40')	3.1	3
PARKING SPACES:	-	44
1 ISLAND / 20 SPACES (MIN. 180 SF):	2	4
PERIMETER LANDSCAPING: (MIN. 5')		400 SF
SHRUBS: 1/15 SF	26.7	27

PLANT SCHEDULE					
QTY.	COMMON NAME	BOTANICAL NAME	HEIGHT	TRUNK	COMMENTS
CANOPY TREES					
1	Chinese pistache	Pistacia chinensis	10' - 12'	2.5" Cal.	B&B
1	TOTAL - CANOPY TREES				
UNDERSTORY/COLUMNAR TREES					
2	'Emerald Green' Arborvitae	Thuja occidentalis 'Smaragd'	6' - 7'		Full to ground, well formed
10	Natchez Crapemyrtle	Lagerstroemia x 'Natchez'	10' MIN.		Multi-trunk, (3) 1 1/2" canes min.
12	TOTAL - UNDERSTORY TREES				
13	TOTAL - ALL TREES				
SHRUBS					
22	Dwarf Yaupon Holly	Ilex vomitoria 'Stoke's Dwarf'	12" Min.	3 Gal.	Container
59	'Eleanor Tabor' Indian Hawthorn	Rhaphiolepis indica 'Conor'	20" Min.	3 Gal.	Container
4	'Little Henry' Virginia Sweetspire	Itea virginica 'Little Henry'	20" Min.	3 Gal.	Container
4	Wax Myrtle	Myrica cerifera	30" Min.	5 Gal.	Container
85	TOTAL - SHRUBS				
GRASSES, PERENNIALS AND GROUND COVER					
1	'Adagio' Maiden Grass	Miscanthus sinensis 'Adagio'	24"	3 Gal.	
34	'Pardon Me' Daylily	Hemerocallis x 'Pardon Me'	8"	1 Gal.	
92	Variegated Liriope	Liriope muscari 'Variegata'		1 Gal.	
TURF					
-	Hybrid Fescue Seed/Sod	Bermuda			



PANDA EXPRESS, INC.  
1683 Walnut Grove Ave.  
Rosemead, California  
91770

Telephone: 626.799.9898  
Facsimile: 626.372.8288

All ideas, designs, arrangement and plans indicated or represented by this drawing are the property of Panda Express Inc. and were created for use on this specific project. None of these ideas, designs, arrangements or plans may be used by or disclosed to any person, firm, or corporation without the written permission of Panda Express Inc.

#### REVISIONS:

1	CIVIL REVISION LDH	12-16-2021
---	--------------------	------------

#### ISSUE DATE:

1	PERMIT ISSUE	04-16-21
---	--------------	----------

DRAWN BY: LEB

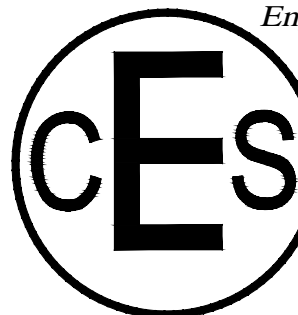
PANDA PROJECT #: S8-21-D8118

PANDA STORE #: D8118

ARCH PROJECT #: XXXX-XXX

Civil Engineering Services

Engineering, Land Planning



7705 Spicer Farm Lane  
Fairview, Tennessee  
37062  
Phone: (615) 533-0401

e-mail: ray@civilengineeringservices.net

PANDA EXPRESS

911 NORTH SERVICE RD.  
RUSTON, LA 71270

LANDSCAPE PLAN

L01.0

TRUE WARM & WELCOME 2300 R3