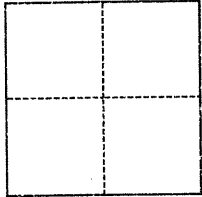


CORNER RECORD

Agency Index BK 129 PG 50
Document Number CR-13326

City of UNINCORPORATED (PLEASANTON) County of ALAMEDA California
Brief Legal Description MONUMENT AT CASTLEWOOD DR AND UPPER GOLF RD 12 MAPS 74-75

CORNER TYPE



- ☐ Government Corner ☒ Control
☐ Meander ☐ Property
☐ Rancho ☐ Other

Date of Survey August 16, 2019

COORDINATES (Optional)

N. _____ E. _____
Elevation _____
Units ☐ Metric ☐ U.S. Survey Foot
Horizontal Datum _____
Zone _____ Epoch Date _____
Vertical Datum _____
☐ Complies with Public Resources Code §§8801-8819
☐ Complies with Public Resources Code §§8890-8902

PLS Act Ref.: ☐ 8765(d) ☒ 8771 ☐ 8773 ☐ Other:
Corner/
Monument: ☒ Left as found ☐ Established ☐ Rebuilt ☒ Pre-Construction
☐ Found and tagged ☐ Reestablished ☒ Referenced ☐ Post-Construction

Narrative of corner identified and monument as found, set, reset, replaced, or removed:

☒ See sheet #2 for description(s):

FOUND COUNTY MONUMENT, IRON PIPE IN MONUMENT WELL AT CASTLEWOOD DR AND UPPER GOLF RD. SET STAINLESS STEEL TAGS AS SHOWN ON PAGE 2.

SURVEYOR'S STATEMENT

This Corner Record was prepared by me or under my direction in conformance with

the Professional Land Surveyors' Act on November 25, 2019

Signed [Signature] P.L.S. or P.E. No. 7905



COUNTY SURVEYOR'S STATEMENT

This Corner Record was received DEC 09 2019

and examined and filed DEC 10 2019

Signed D. Ian Wilson P.L.S. or P.E. No. 7010

Title **ALAMEDA COUNTY SURVEYOR**

County Surveyor's Comment

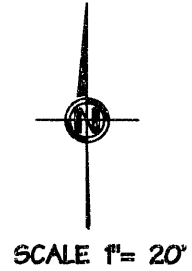
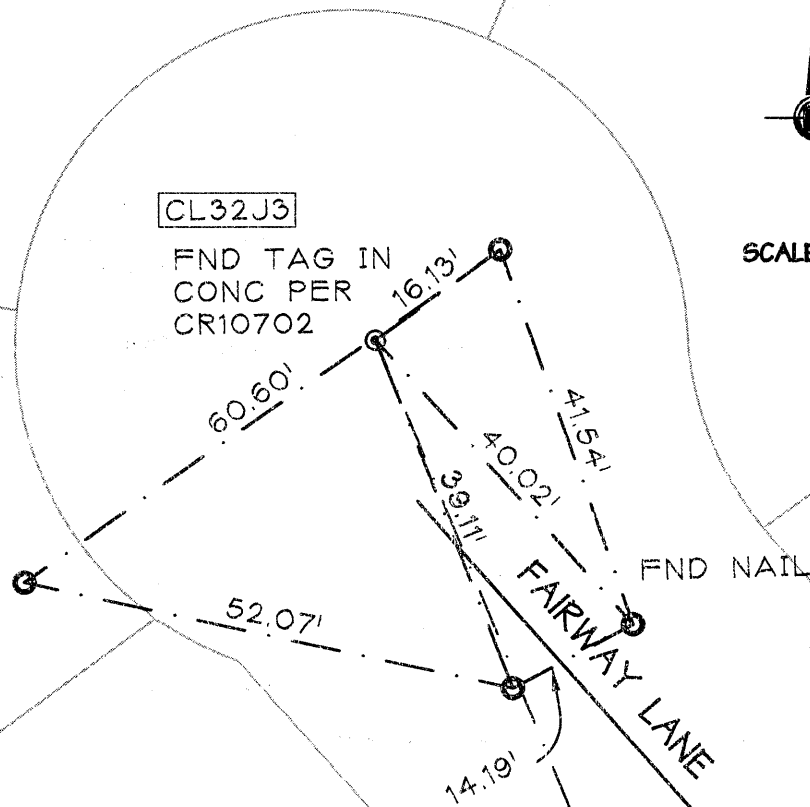
SPEC 2380

APN: 946-4396-7-1



APN: 946-4396-7-1

22 FAIRWAY LN

LEGEND:

FOUND STANDARD ALAMEDA
COUNTY MONUMENT (C)
SET BRASS TAG L.S. 7905 (O)
WITH MAG NAIL (N)