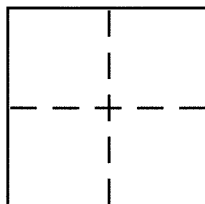


CORNER RECORDDocument Number CR 7738City of BERKELEYCounty of ALAMEDA, CaliforniaBrief Legal Description CITY OF BERKELEY MONUMENT B0618**CORNER TYPE**

Government Corner ☐ Control ☒
 Meander ☐ Property ☐
 Rancho ☐ Other ☐
 Date of Survey OCTOBER 27, 2015

COORDINATES (Optional)

N. _____
 E. _____
 Zone _____ NAD27 ☐ NAD83 ☐
 NAD83 Epoch _____
 Elev. _____
 Vert. Datum: NGVD29 ☐ NAVD88 ☐
 Meas. Units: Metric ☐ Imperial ☐

Corner – Left as found ☒ Found and tagged ☐ Established ☐ Reestablished ☐ Rebuilt ☐

Identification and type of corner found: Evidence used to identify or procedure used to establish or reestablish the corner:
IN COMPLIANCE WITH SECTION 8771 OF THE PROFESSIONAL LAND SURVEYORS' ACT, THIS CORNER
RECORD IS BEING FILED TO ESTABLISH THE POSITION OF AN EXISTING MONUMENT PRIOR TO
SANITARY SEWER RECONSTRUCTION. (SEE PAGE 2)

A description of the physical condition of the monument as found and as set or reset: _____
(SEE PAGE 2)

SURVEYOR'S STATEMENT

This Corner Record was prepared by me or under my direction in conformance with
 the Land Surveyors Act on OCTOBER 30, 2015

Signed [Signature] P.L.S. or R.C.E. No. 5003

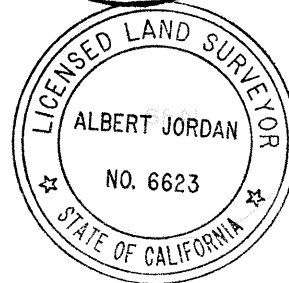
COUNTY SURVEYOR'S STATEMENT

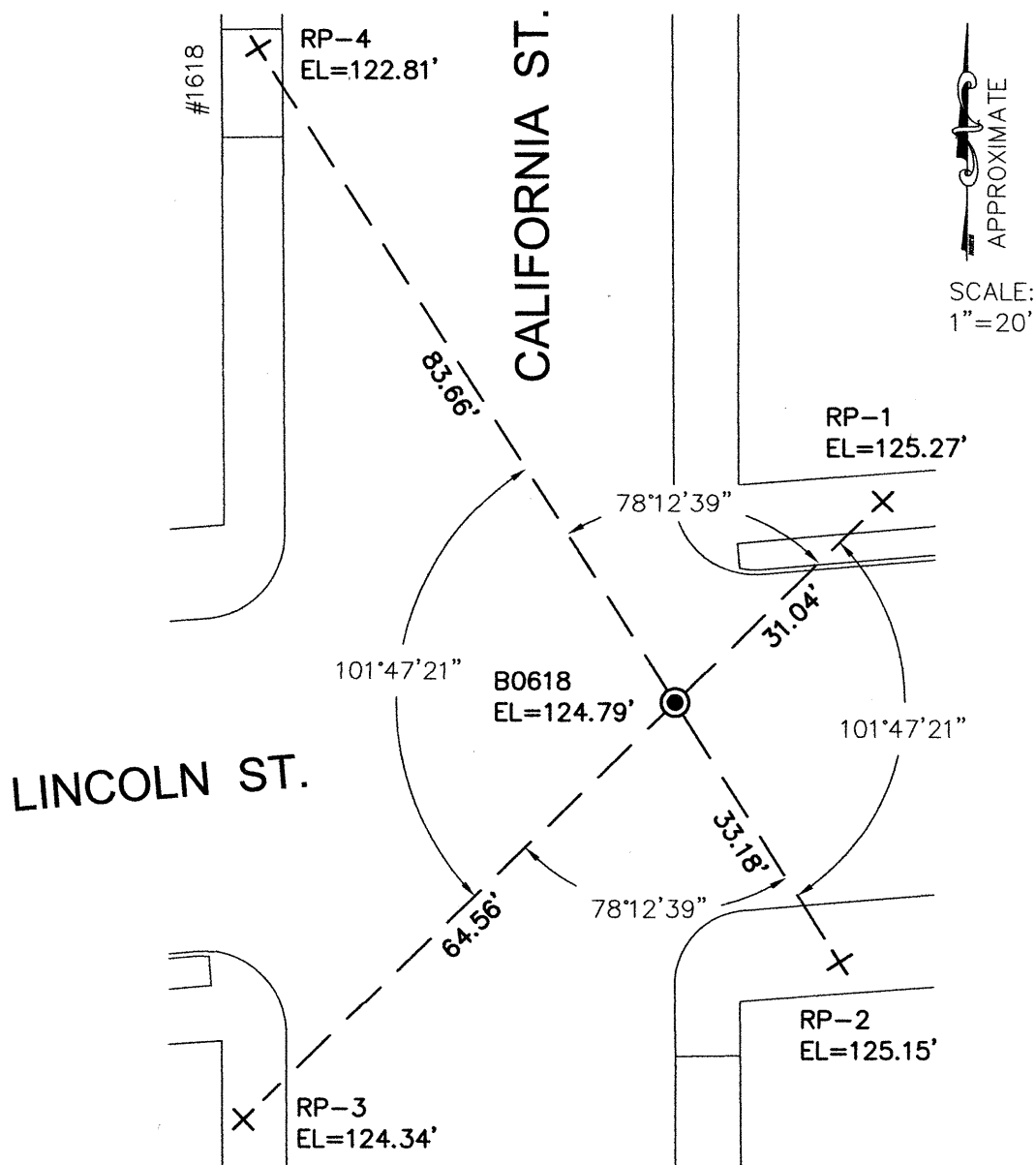
This Corner Record was received 11-25-2015
 and examined and filed 12-14-2015

Signed Albert Jordan P.L.S. or R.C.E. No. 6623

Title Deputy County Surveyor

County Surveyor's Comment _____





LEGEND

- ⊙ 1" IRON PIN CITY MONUMENT IN A STANDARD MONUMENT WELL
- + SET REFERENCE CROSS

NOTE:

THE EXISTING MONUMENT AS SHOWN IS REFERENCED BY STRAIGHT LINES BETWEEN RP-1 TO RP-3 AND RP-2 TO RP-4.