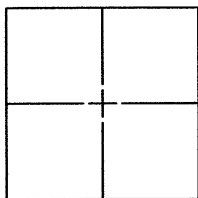


**CORNER RECORD**Document Number CR 6331City of BERKELEY County of ALAMEDA, CaliforniaBrief Legal Description CITY OF BERKELEY MONUMENT B-2106, LOCATED ON WILDCAT CANYON ROAD**CORNER TYPE**

Government Corner ☐ Control ☒  
 Meander ☐ Property ☐  
 Rancho ☐ Other ☐  
 Date of Survey 5/21/2014

**COORDINATES (Optional)**

N. \_\_\_\_\_  
 E. \_\_\_\_\_  
 Zone \_\_\_\_\_ NAD27 ☐ NAD83 ☐  
 NAD83 Epoch \_\_\_\_\_  
 Elev. \_\_\_\_\_  
 Vet. Datum: NGVD29 ☐ NAVD88 ☐  
 Meas. Units: Metric ☐ Imperial ☐

**Corner** — Left as found ☒ Found and tagged ☐ Established ☐ Reestablished ☐ Rebuilt ☐

Identification and type of corner found: Evidence used to identify or procedure used to establish or reestablish the corner:  
THIS CORNER RECORD IS BEING FILED PURSUANT TO SECTION 8771.(b) OF THE CALIFORNIA BUSINESS AND  
PROFESSIONS CODE. SEE PAGE 2 FOR DETAILS.

A description of the physical condition of the monument as found and as set or reset: \_\_\_\_\_

FOUND AND SET POINTS AS SHOWN ON PAGE 2.

**SURVEYOR'S STATEMENT**

This Corner Record was prepared by me or under my direction in conformance with

the Land Surveyor's Act on JUNE 17, 20 14

Signed Patrick M. Rei P.L.S. or R.C.E. No. 8178

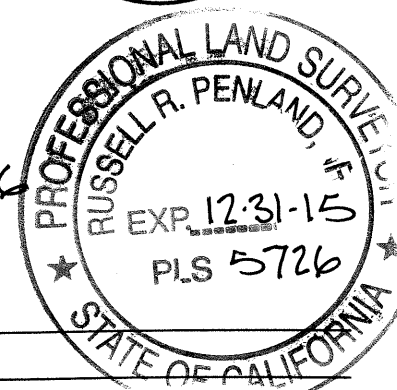
**COUNTY SURVEYOR'S STATEMENT**

This Corner Record was received 6-30 20 14

and examined and filed 11-19- 20 14

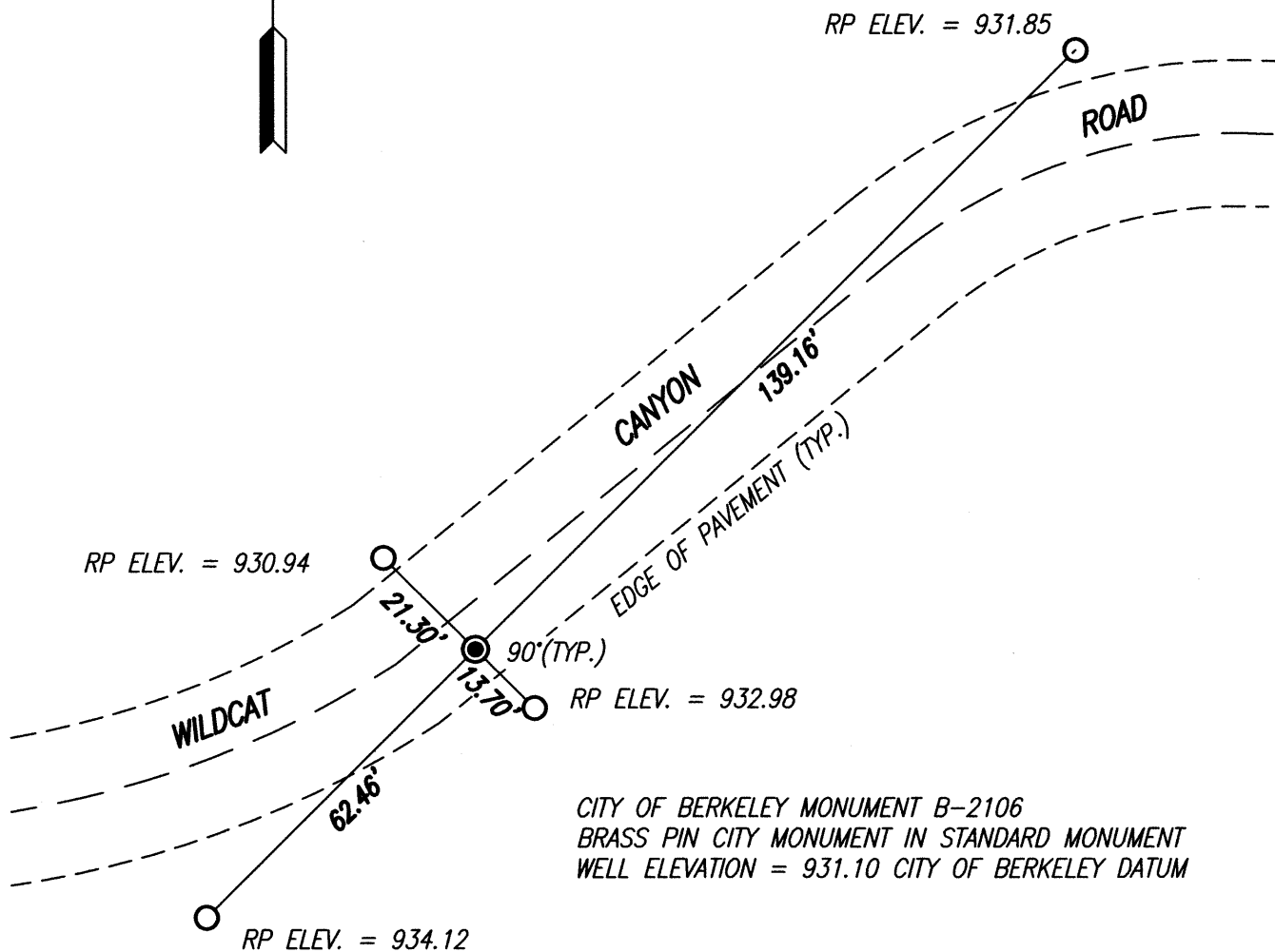
Signed Russell R. Penland P.L.S. or R.C.E. No. 5726

Title COUNTY SURVEYOR



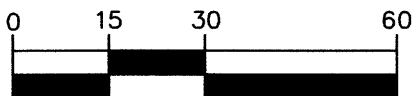
**County Surveyor's Comment:** \_\_\_\_\_

KSR JOB# 19372 K411P6



APN: 63-3160-03

# GRAPHIC SCALE



( IN FEET )  
1 inch = 30 ft.

## LEGEND

- = FOUND SURVEY MONUMENT AS NOTED
- = SET 5/8" REBAR & CAP, L.S. No. 8178

RP ELEVATIONS ESTABLISHED BY DIFFERENTIAL  
LEVELING USING A SOKKIA SDL 30 DIGITAL LEVEL.