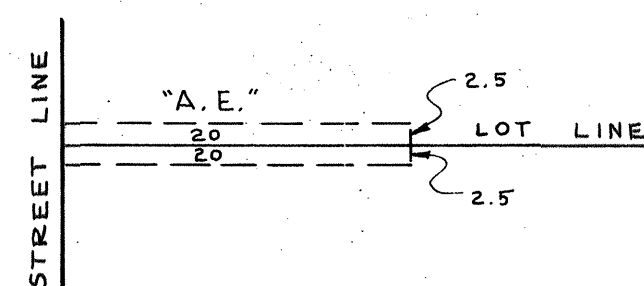


T.R.
2106

ANCHOR EASEMENT DETAIL



BASIS OF BEARINGS:

THE CENTERLINE OF LAKE CHABOT ROAD
IS TAKEN AS N 14° 31' 30" W

LEGEND:

EXISTING MONUMENT — — — — — ●
CONCRETE MONUMENT WITH CAST IRON
FRAMES AND COVERS, TO BE INSTALLED — — — — — ●
ANCHOR EASEMENT
(SEE DETAIL) — — — — — "A.E."

BUILDING SET-BACK LINES:

BUILDING SET-BACK LINES TO BE AS REQUIRED
BY THE ORDINANCE CODE OF THE COUNTY
OF ALAMEDA TITLE 9, CHAPTER 2.

TRACT 210-6

EDEN TOWNSHIP
ALAMEDA COUNTY, CALIFORNIA
IN UNINCORPORATED TERRITORY IN THE COUNTY OF ALAMEDA

SEPTEMBER 1959

SCALE: 1" = 40'

MURRAY & McCORMICK INC.

CIVIL ENGINEERS

SAN LEANDRO, CALIFORNIA

AQ141265

SHEET NO. 2 OF 2 SHEETS