

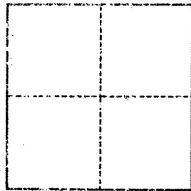
CORNER RECORD

Agency Index BK 108 PG 14
Document Number CR11198

City of OAKLAND (APN 48D-7276-11) County of ALAMEDA, California
Brief Legal Description MONUMENT WELL LOCATED WITHIN THE INTERSECTION OF
CAMELFORD COURT AND CAMELFORD PLACE

CORNER TYPE

COORDINATES (Optional)



- ☐ Government Corner ☐ Control
☐ Meander ☐ Property
☐ Rancho ☒ Other

Date of Survey March 28, 2018

N _____ E _____

Elevation _____

Units ☐ Metric ☒ U.S. Survey Foot

Horizontal Datum _____

Zone _____ Epoch Date _____

Vertical Datum _____

☐ Complies with Public Resources Code §§8801-8819

☐ Complies with Public Resources Code §§8890-8902

PLS Act Ref.:

☐ 8765(d)

☒ 8771

☐ 8773

☐ Other:

Corner/
Monument:

☒ Left as found

☐ Established

☐ Rebuilt

☒ Pre-Construction

☐ Found and tagged

☐ Reestablished

☒ Referenced

☐ Post-Construction

Narrative of corner identified and monument as found, set, reset, replaced, or removed:

☐ See sheet #2 for description(s):

FOUND PIN IN MONUMENT WELL LOCATED WITHIN THE INTERSECTION OF CAMELFORD COURT AND CAMELFORD PLACE AS SHOWN ON OAKLAND MONUMENT MAP, PAGE 260.

THIS POINT WAS REFERENCED PRIOR TO A CONSTRUCTION PROJECT IN THE VICINITY.

SURVEYOR'S STATEMENT

This Corner Record was prepared by me or under my direction in conformance with

the Professional Land Surveyors' Act on March 28, 2018

Signed

[Signature]

(P.L.S.) or R.C.E. No.

8934



COUNTY SURVEYOR'S STATEMENT

This Corner Record was received 12 APRIL 2018

and examined and filed 18 JUNE 2018

Signed

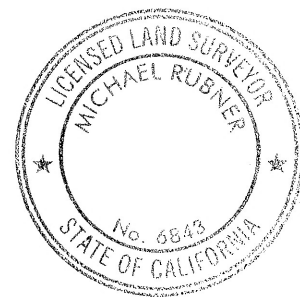
[Signature]

P.L.S. or R.C.E. No. 6843

Title

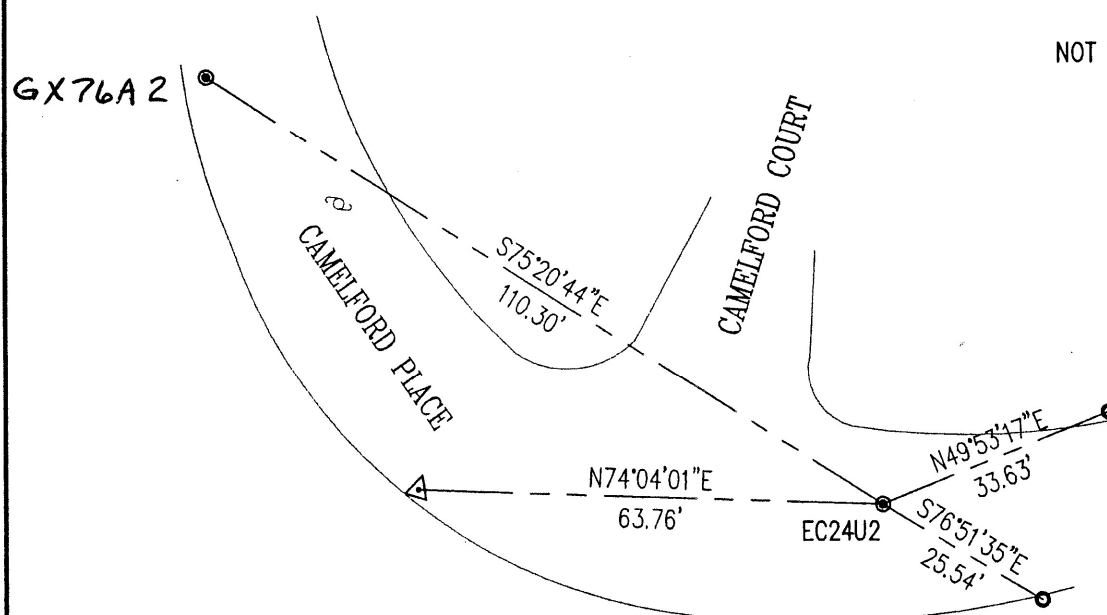
COUNTY SURVEYOR

County Surveyor's Comment





NOT TO SCALE

**LEGEND****SYMBOLS****DESCRIPTION**

FOUND STANDARD CITY OF OAKLAND MONUMENT



SET REBAR AND CAP



SET MAG NAIL

LUK & ASSOCIATES

JOB NO.: 18049A10