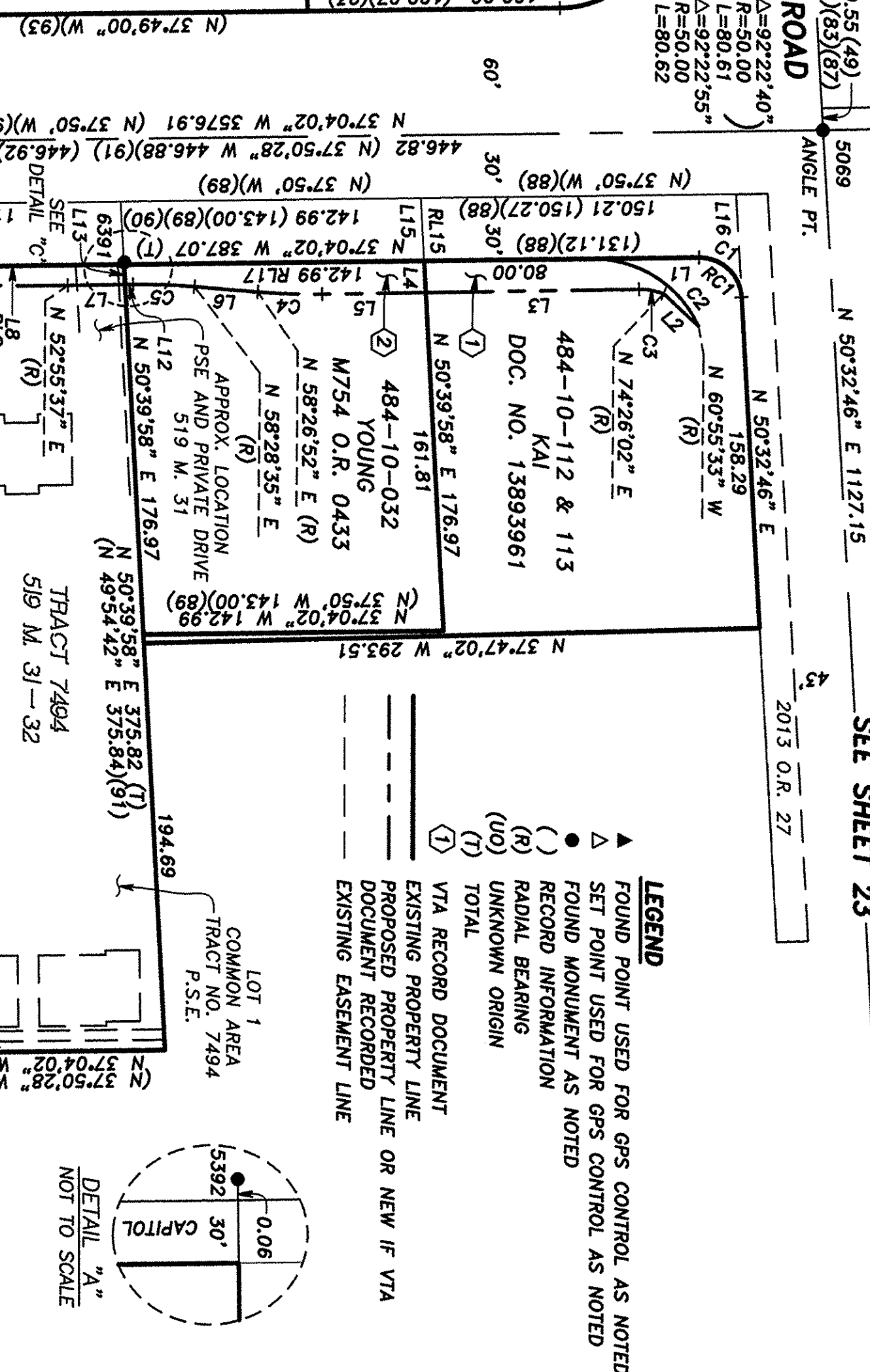


**SEE SHEET 23**



BEING THE LANDS ALONG CAPITOL AVENUE  
FROM GREENGATE DRIVE TO CAPITOL EXPRESSWAY  
LYING WITHIN THE CITY OF SAN JOSE

SANTA CLARA COUNTY, CALIFORNIA  
SCALE: 1" = 60' SURVEYED 1998 - 2000

CONSISTING OF 32 SHEETS  
SHEET 24 OF 32

NO.	DELTA	RADIUS	LENGTH	RECORD
RC1	(87.39.00")	(20.00)	(30.60)	(88)
RC9	(89.59.53")	(20.00)	(31.42)	(96)(98)
RC10	(08.59.56")	(500.00)	(78.53)	(96)
	(09.00.25")	(500.00)	(78.60)	(97)

NO.	DIRECTION	LENGTH	RECORD
RL8	(N 37°50.28' W)	(113.12)	(91)
RL10	(N 37°49.07' W)	(20.00)	(96/98)
RL11	(N 37°49.07' W)	(40.00)	(96)
RL17	(N 37°51.30' W)	(41.00)	(97)
RL15	(N 49°54' E)	(30.02)	(90/88)
RL16	(N 49°49' E)	(49.22)	(88)
RL17	(N 37°49' E)	(143.00)	(90)

LINE TABLE		
NO.	DIRECTION	LENGTH
L1	N 37°04'02" W	51.09
L2	N 06°40'46" E	22.70
L3	N 37°14'45" W	101.46
L4	N 50°39'58" E	15.16
L5	N 37°14'45" W	49.43
L6	N 31°32'17" W	30.43
L7	N 37°14'45" W	27.39
L8	N 37°04'02" W	112.99
L9	N 37°53'54" W	39.07
L10	N 37°04'02" W	20.00
L11	N 37°04'02" W	40.05
L12	N 37°14'45" W	3.76
L13	N 50°39'58" E	9.61
L14	N 52°54'08" E	7.86
L15	N 50°39'58" E	30.16
L16	N 50°32'46" E	49.21

RD  
\_\_\_\_\_  
\_\_\_\_\_  
(8)  
\_\_\_\_\_

2' ON EACH SIDE OF PLACED FACILITIES  
C277 O.R. 488  
4' WIDE PT&T  
C433 O.R. 516  
10' WIDE PG&E  
CENTERLINE OF WHICH LOCATED ON THE GROUND  
AND APPROVED BY CAPITOL-MCKEE INVESTORS  
C647 O.R. 522  
10' WIDE PG&E  
CENTERLINE OF WHICH LOCATED ON THE GROUND  
AND APPROVED BY CAPITOL-MCKEE INVESTORS

**NOTES:**

THIS PARCEL CONTAINS CONDOMINIUMS AND MANY EASEMENTS  
RELATIVE TO THAT FACT

1. SEE SHEET 2 & 3 FOR GPS CONTROL DIAGRAM AND BASIS OF BEARINGS.

2. SEE SHEET 4 FOR RECORD REFERENCE TABLE.
3. MEASURED COURSES ARE GRID NAD83 BEARINGS AND DISTANCES. MULTIPLY GRID DISTANCES BY 1.00005101 TO OBTAIN GROUND LEVEL DISTANCES

**VTA DOCUMENT**

1	DOC. NO. 16076030
2	DOC. NO. 15591446
3	DOC. NO. 16243211
4	DOC. NO. 16489327

POINT	DESCRIPTION
GPS 46	SET 2" ALUM. DISK STAMPED "SANTA CLARA VALLEY TRANSPORTATION AUTHORITY 1998 46"
5069	FD. 1" I.P. (.44)/(52)/(54)/(80)/(83)/(87)/(91)/(93)/(94)/(95)/(97)/(98)
5081	FD. 3/4" BRASS PIN W/PUNCH (91)/(93)/(95)/(96)/(97)/(98)
5088	FD. 3/4" BRASS PIN W/PUNCH (91)/(95)/(96)/(97)
5384	FD. 2-1/2" BRASS DISK W/PUNCH IN MON. WELL (91)
5392	FD. CONC. NAIL (94)
5406	FD. 3/4" I.P. W/TACK (95)
5408	FD. 1/2" BRASS PIN W/CUT X (95)/(96)/(97)/(98)
5421	FD. 3/4" BRASS PIN (96)/(97)
5986	FD. BRASS PIN IN CONC. (118)(119)
6391	FD. CUT X IN SIDEWALK (UO)

SEE SHEET

**SEE SHEET 25**

**P.D.F.** 111 W. ST. JOHN STREET, SUITE 850  
SAN JOSE, CA 95113  
(408) 993-9224  
CONSULTING

**P/W**  
**PROFESSIONALS**

PROJECT NO. 9828-01  
RBF JN 35-600087.013

24