

# CORNER RECORD

BK 86 PG 12  
CR 8723

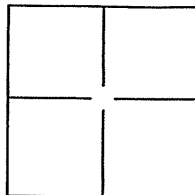
Document Number

City of CASTRO VALLEY AREA

County of ALAMEDA, California

Brief Legal Description ALAMEDA COUNTY MONUMENT NO. VV83T7. FOUND MONUMENT IN CUL-DE-SAC IN DEXTER COURT NORTH OF D STREET.

## CORNER TYPE



Government Corner ☐ Control ☐  
Meander ☐ Property ☐  
Rancho ☐ Other ☐

Date of Survey MAY 27, 2016

## COORDINATES(Optional)

N. \_\_\_\_\_

E. \_\_\_\_\_

Zone \_\_\_\_\_ NAD27 ☐ NAD83 ☐

NAD83 Epoch ALAMEDA

Elev. \_\_\_\_\_

Vert. Datum: NGVD29 ☐ NADV88 ☐

Meas. Units: Metric ☐ Imperial ☒

Corner - Left as found ☒ Found and tagged ☐ Established ☐ Reestablished ☐ Rebuilt ☐

Identification and type of corner found: Evidence used to identify or procedure used to establish or reestablish the corner:

FOUND MONUMENT NO. VV83T7 AND SURVEY MONUMENT TIES AS SHOWN ON SHEET 2 OF 2.

A description of the physical condition of the monument as found and as set or reset:

I FOUND THE MONUMENT AND REFERENCE POINTS IN GOOD CONDITION AND AS SHOWN ON SHEET 2 OF 2. NOTE THAT BEARINGS ARE APPROXIMATE AND ARE TO BE USED FOR ANGLE CALCULATIONS ONLY.

## SURVEYOR'S STATEMENT

This Corner Record was prepared by me or under my direction in conformance with the Land Surveyor's Act on JULY 29, 2016.

Signed [Signature] P.L.S. or R.C.E. No.: LS 5837



## COUNTY SURVEYOR'S STATEMENT

This Corner Record was received 15 AUGUST, 2016 and examined and filed 3 NOVEMBER, 2016.

Signed Michael Rubner P.L.S. or R.C.E. No.: 6843

Title Michael Rubner

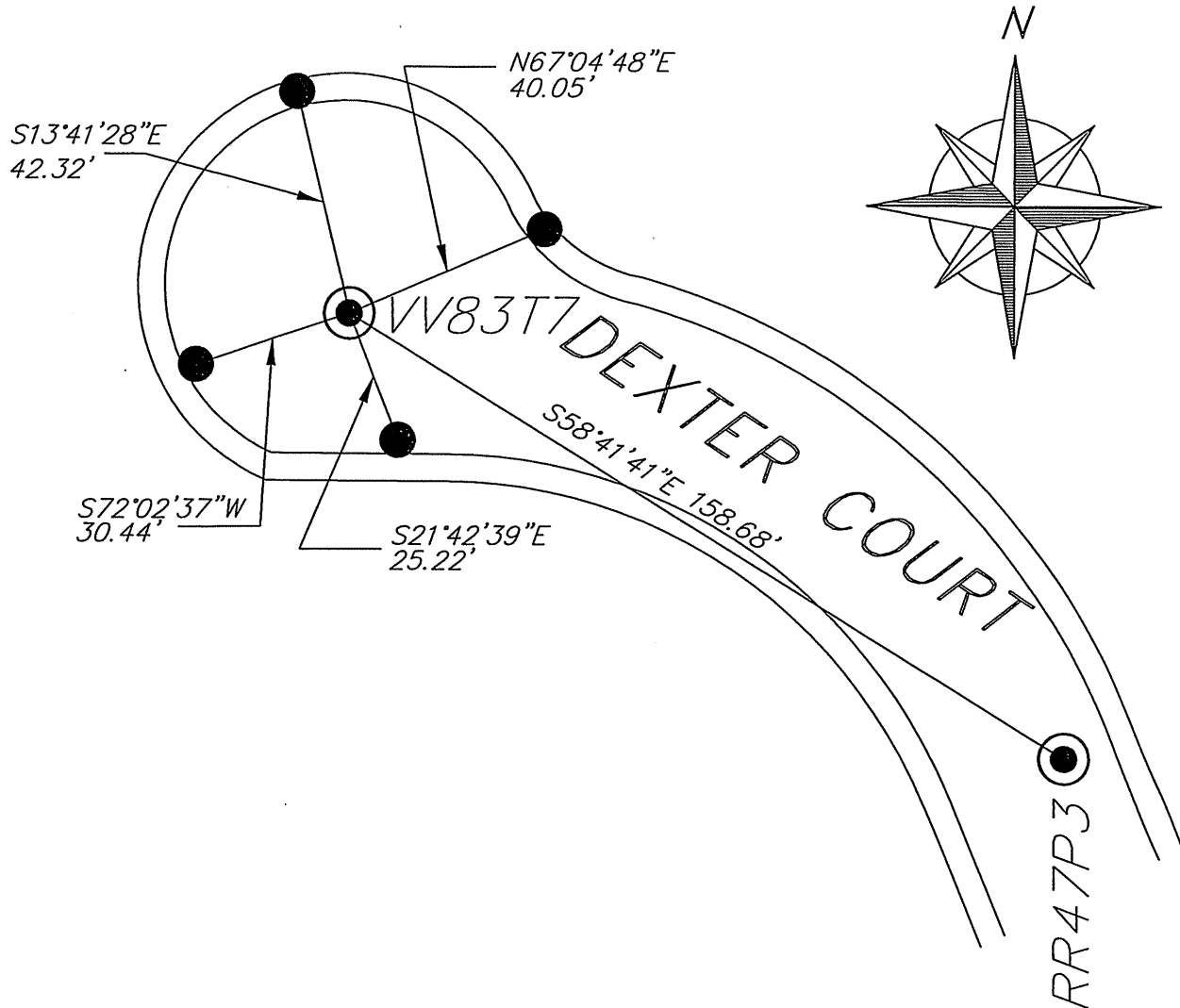
County Surveyor's Comment \_\_\_\_\_



PRE CR 8009

SPEC 2279

# POINT "VV83T7"



## LEGEND



FOUND FINISH NAIL IN MONWELL.  
NAIL SET IN CONCRETE 6" DOWN  
AND FLUSH WITH CONCRETE.



FOUND SCRIBED "X" IN TOP OF CURB  
UNLESS OTHERWISE NOTED.

VV83T7 ALAMEDA COUNTY MONUMENT  
NUMBER.

NOT TO SCALE