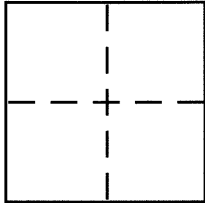


CORNER RECORDDocument Number CR 7494City of BERKELEYCounty of ALAMEDA, CaliforniaBrief Legal Description CITY OF BERKELEY MONUMENT B2586**CORNER TYPE**

Government Corner ☐ Control ☒
 Meander ☐ Property ☐
 Rancho ☐ Other ☐
 Date of Survey JUNE 17, 2015

COORDINATES (Optional)

N. _____
 E. _____
 Zone _____ NAD27 ☐ NAD83 ☐
 NAD83 Epoch _____
 Elev. _____
 Vert. Datum: NGVD29 ☐ NAVD88 ☐
 Meas. Units: Metric ☐ Imperial ☐

Corner – Left as found ☒ Found and tagged ☐ Established ☐ Reestablished ☐ Rebuilt ☐

Identification and type of corner found: Evidence used to identify or procedure used to establish or reestablish the corner:

**IN COMPLIANCE WITH SECTION 8771 OF THE PROFESSIONAL LAND SURVEYORS' ACT, THIS CORNER
 RECORD IS BEING FILED TO ESTABLISH THE POSITION OF AN EXISTING MONUMENT PRIOR TO
 SANITARY SEWER RECONSTRUCTION. (SEE PAGE 2)**

A description of the physical condition of the monument as found and as set or reset: _____
 (SEE PAGE 2)

SURVEYOR'S STATEMENT

This Corner Record was prepared by me or under my direction in conformance with
 the Land Surveyor's Act on JULY 8, 2015

Signed [Signature] P.L.S. or R.C.E. No. 5003

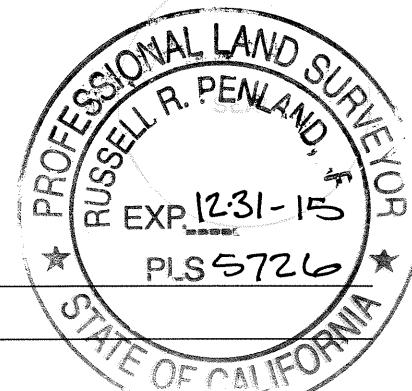
**COUNTY SURVEYOR'S STATEMENT**

This Corner Record was received 8-14-15
 and examined and filed 9-10-15

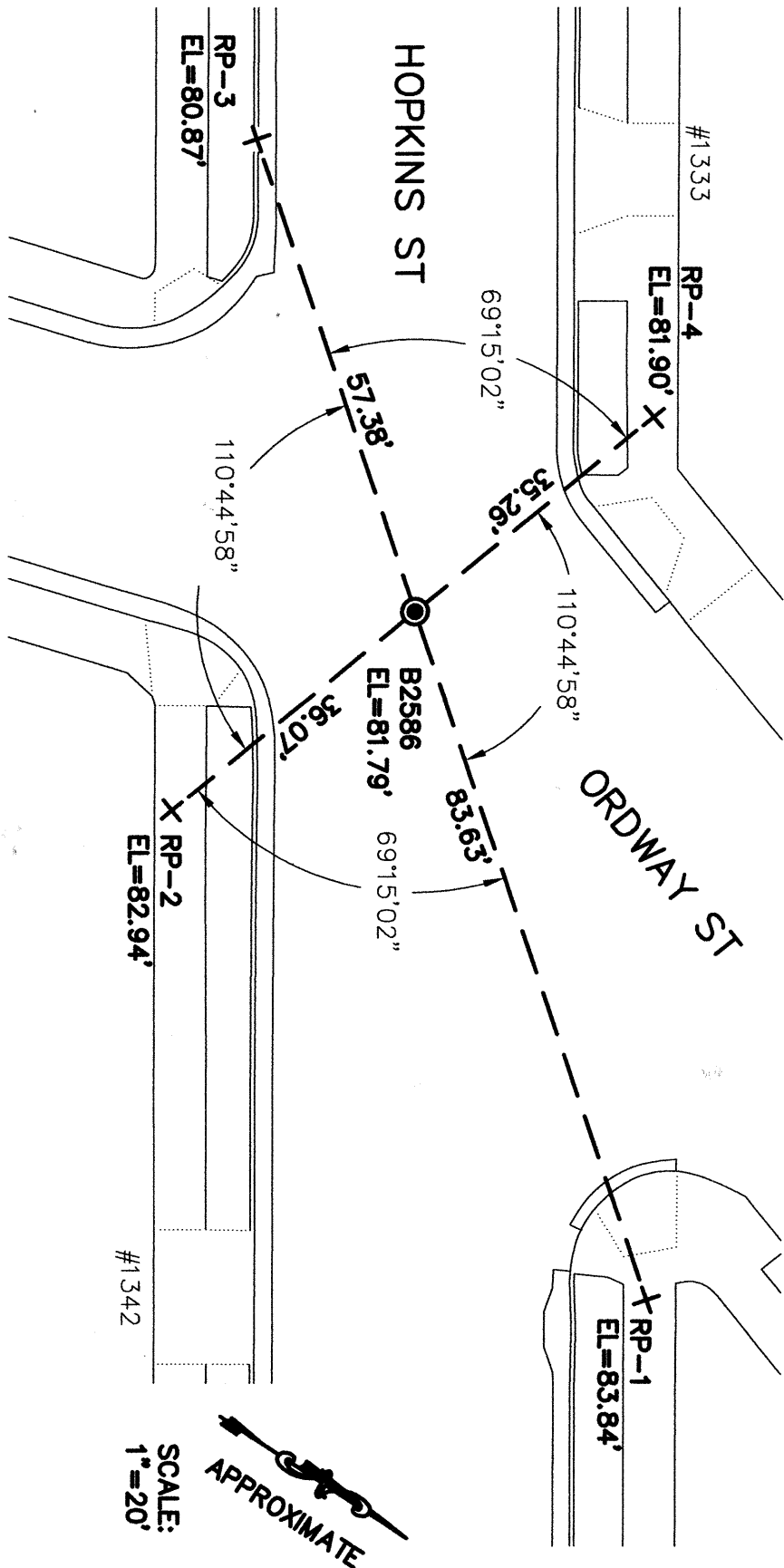
Signed [Signature] P.L.S. or R.C.E. No. 5726

Title COUNTY SURVEYOR

County Surveyor's Comment _____



YD56C7



LEGEND

- 3/8" BRASS PIN CITY MONUMENT IN A STANDARD MONUMENT WELL
- + SET REFERENCE CROSS

NOTE:

THE EXISTING MONUMENT AS SHOWN IS REFERENCED BY STRAIGHT LINES BETWEEN RP-1 TO RP-3 AND RP-2 TO RP-4.