

SECTION 2

U.S.F.S.

LEGEND

- SET 5/8" REBAR WITH ALUMINUM CAP STAMPED "1997, LS 4587"
- FOUND MONUMENT AS NOTED ON SHEET 1
- EXISTING TOWN/COUNTY BOUNDARY PER 659/22 O.R. (AND EXISTING TOWN INCORPORATED LIMITS AND EXISTING REDEVELOPMENT AGENCY LINE)
- PARCEL 1 PROPERTY LINE

RECORD INFORMATION

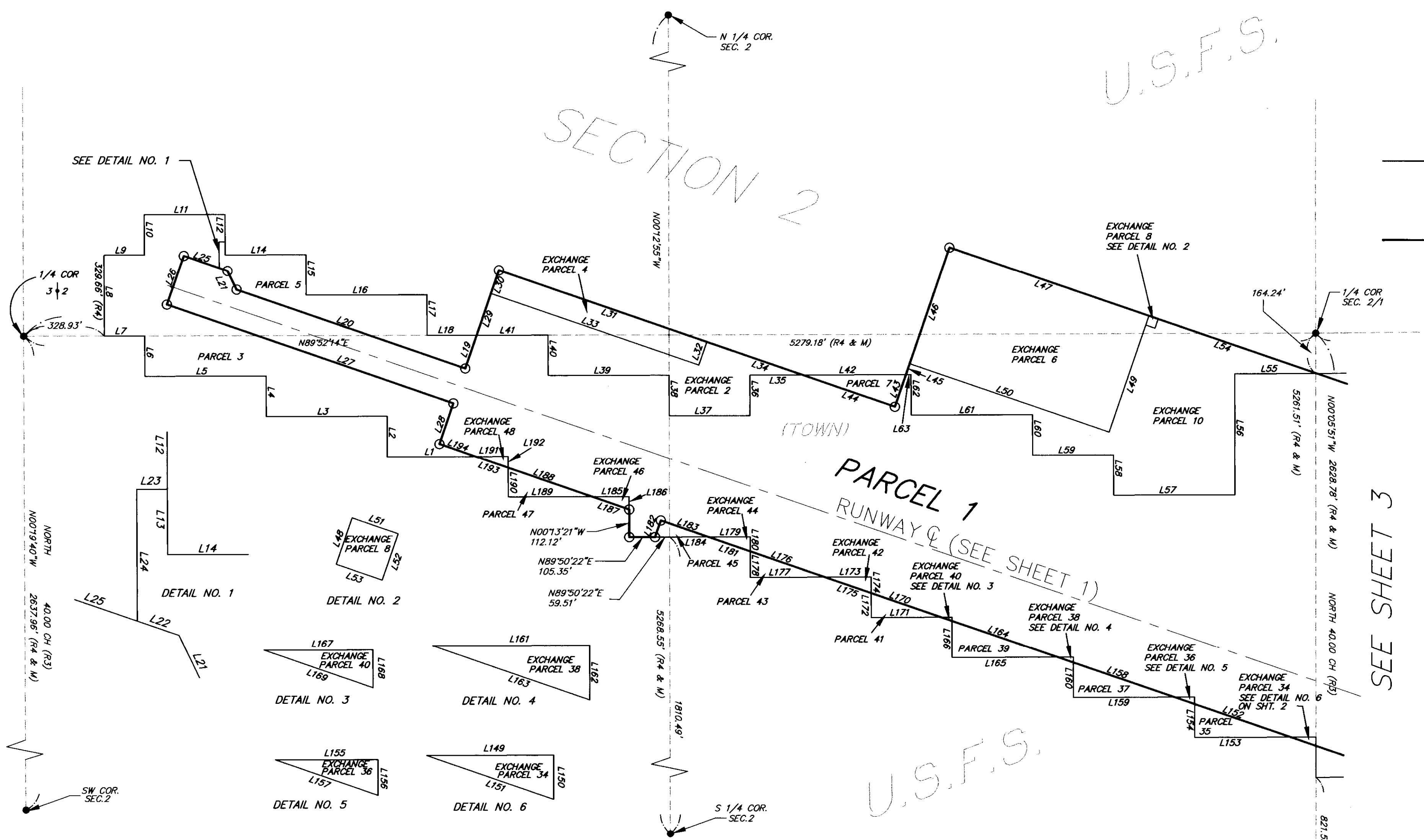
- R1 = RECORD INFORMATION PER RSMB 1, PAGE 107.
- R2 = RECORD INFORMATION PER BLM NOTES #483-5 DATED 6-9-1927.
- R3 = RECORD INFORMATION PER BLM NOTES 113-13 DATED 5-30-1855.
- R4 = RECORD INFORMATION PER RSMB 2, PAGE 44.

NOTE: ALL PARCELS LABELED "EXCHANGE" ARE A PORTION OF PARCEL 1 PER THIS SURVEY  
ALL DETAILS NOT TO SCALE

SCALE: 1" = 300'

RECORD OF SURVEY NO. 36 - 127

TOWN OF MAMMOTH LAKES & UNINCORPORATED TERRITORY OF MONO COUNTY, CALIFORNIA BEING A SURVEY OF THAT PROPERTY INTERCHANGE BETWEEN THE TOWN OF MAMMOTH LAKES AND THE U.S. FOREST SERVICE LOCATED IN A PORTION OF SECTIONS 1 AND 2, TOWNSHIP 4 SOUTH, RANGE 28 EAST, MOUNT DIABLO BASELINE & MERIDIAN.



LINE	DIRECTION	DISTANCE	LINE	DIRECTION	DISTANCE	LINE	DIRECTION	DISTANCE	LINE	DIRECTION	DISTANCE	LINE	DIRECTION	DISTANCE
L1	N89°51'07"E	361.95'	L23	N89°53'37"E	24.99'	L45	N18°55'39"E	47.27'	L152	N71°04'21"W	412.92'	L174	N00°10'43"W	65.78'
L2	N00°15'52"W	164.71'	L24	N00°17'08"W	107.10'	L46	N18°55'39"E	500.00'	L153	N89°48'30"E	390.31'	L175	N71°04'21"W	201.07'
L3	N89°51'29"E	494.78'	L25	N71°04'21"W	153.03'	L47	N71°04'21"W	859.97'	L154	N00°07'11"W	135.25'	L176	N71°04'21"W	322.37'
L4	N00°17'08"W	164.76'	L26	N19°07'42"E	210.00'	L48	N18°55'39"E	39.87'	L155	N89°48'53"E	84.03'	L177	N89°50'00"E	304.57'
L5	N89°51'52"E	494.84'	L27	N71°04'21"W	1239.38'	L49	N18°55'39"E	460.13'	L156	N00°07'11"W	29.11'	L178	N00°12'02"W	105.45'
L6	N00°18'24"W	164.82'	L28	N18°55'39"E	175.00'	L50	N71°04'21"W	859.97'	L157	N71°04'21"W	88.90'	L179	N89°50'22"E	170.73'
L7	N89°52'14"E	164.97'	L29	N18°55'39"E	179.81'	L51	N71°04'21"W	40.00'	L158	N71°04'21"W	434.17'	L180	N00°12'02"W	59.10'
L8	N00°18'49"W	329.67'	L30	N18°55'39"E	100.00'	L52	N18°55'39"E	39.88'	L159	N89°48'53"E	410.35'	L181	N71°04'21"W	180.71'
L9	N89°53'00"E	165.01'	L31	N71°04'21"W	899.22'	L53	N71°04'21"W	40.00'	L160	N00°08'30"W	142.16'	L182	N18°58'35"E	71.46'
L10	N00°18'24"W	164.82'	L32	N18°55'39"E	100.00'	L54	N71°04'21"W	683.64'	L161	N89°49'15"E	64.23'	L183	N71°04'21"W	206.46'
L11	N89°53'23"E	330.06'	L33	N71°04'21"W	899.22'	L55	N89°51'30"E	334.42'	L162	N00°08'30"W	22.24'	L184	N89°50'22"E	218.53'
L12	N00°17'33"W	111.65'	L34	N71°04'21"W	414.69'	L56	N00°06'44"W	493.00'	L163	N71°04'21"W	67.96'	L185	N89°50'45"E	151.65'
L13	N00°17'33"W	53.13'	L35	N89°51'52"E	216.02'	L57	N89°50'45"E	494.69'	L164	N71°04'21"W	455.25'	L186	N00°13'21"W	52.48'
L14	N89°53'00"E	330.02'	L36	N00°12'02"W	164.55'	L58	N00°08'04"W	164.39'	L165	N89°49'15"E	430.21'	L187	N71°04'21"W	160.53'
L15	N00°16'43"W	164.74'	L37	N89°51'29"E	329.88'	L59	N89°51'07"E	329.84'	L166	N00°09'50"W	149.02'	L188	N71°04'21"W	363.15'
L16	N89°52'37"E	494.96'	L38	N00°12'55"W	164.59'	L60	N00°08'57"W	164.42'	L167	N89°49'37"E	44.60'	L189	N89°50'45"E	343.01'
L17	N00°15'27"W	164.69'	L39	N89°51'52"E	494.84'	L61	N89°51'29"E	494.82'	L168	N00°09'50"W	15.44'	L190	N00°14'36"W	118.72'
L18	N89°52'14"E	202.72'	L40	N00°14'11"W	164.64'	L62	N00°10'16"W	164.48'	L169	N71°04'21"W	47.20'	L191	N89°51'07"E	132.77'
L19	N18°55'39"E	143.43'	L41	N89°52'14"E	292.18'	L63	N89°51'52"E	21.40'	L170	N71°04'21"W	301.69'	L192	N00°14'36"W	45.94'
L20	N71°04'21"W	989.73'	L42	N89°51'52"E	422.43'	L149	N89°48'30"E	104.00'	L171	N89°49'37"E	285.07'	L193	N71°04'21"W	140.56'
L21	N25°58'19"W	84.70'	L43	N18°55'39"E	137.97'	L150	N00°05'56"W	36.03'	L172	N00°10'43"W	98.72'	L194	N71°04'21"W	156.98'
L22	N71°04'21"W	36.08'	L44	N71°04'21"W	399.26'	L151	N71°04'21"W	110.01'	L173	N89°50'00"E	190.00'			